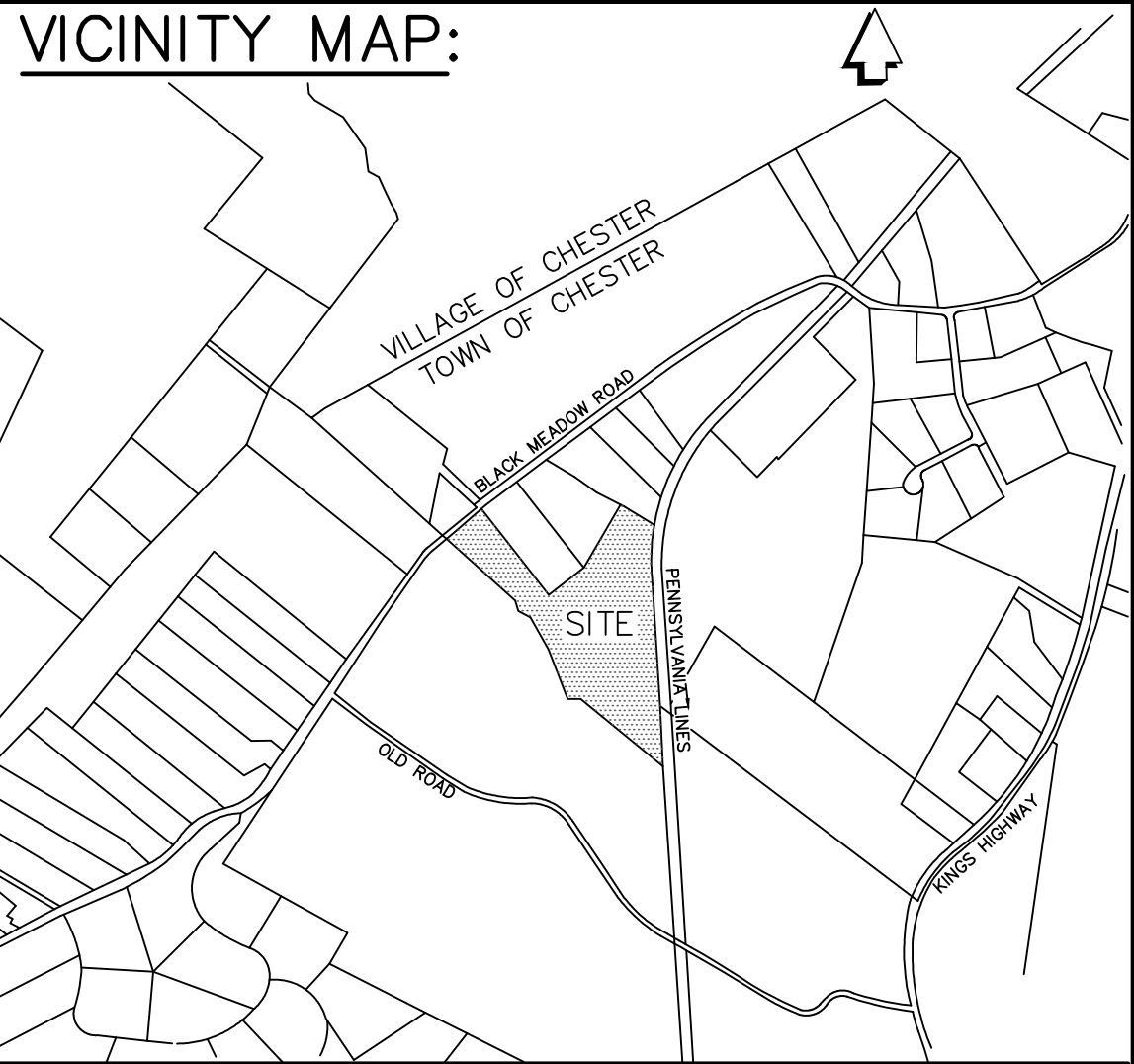
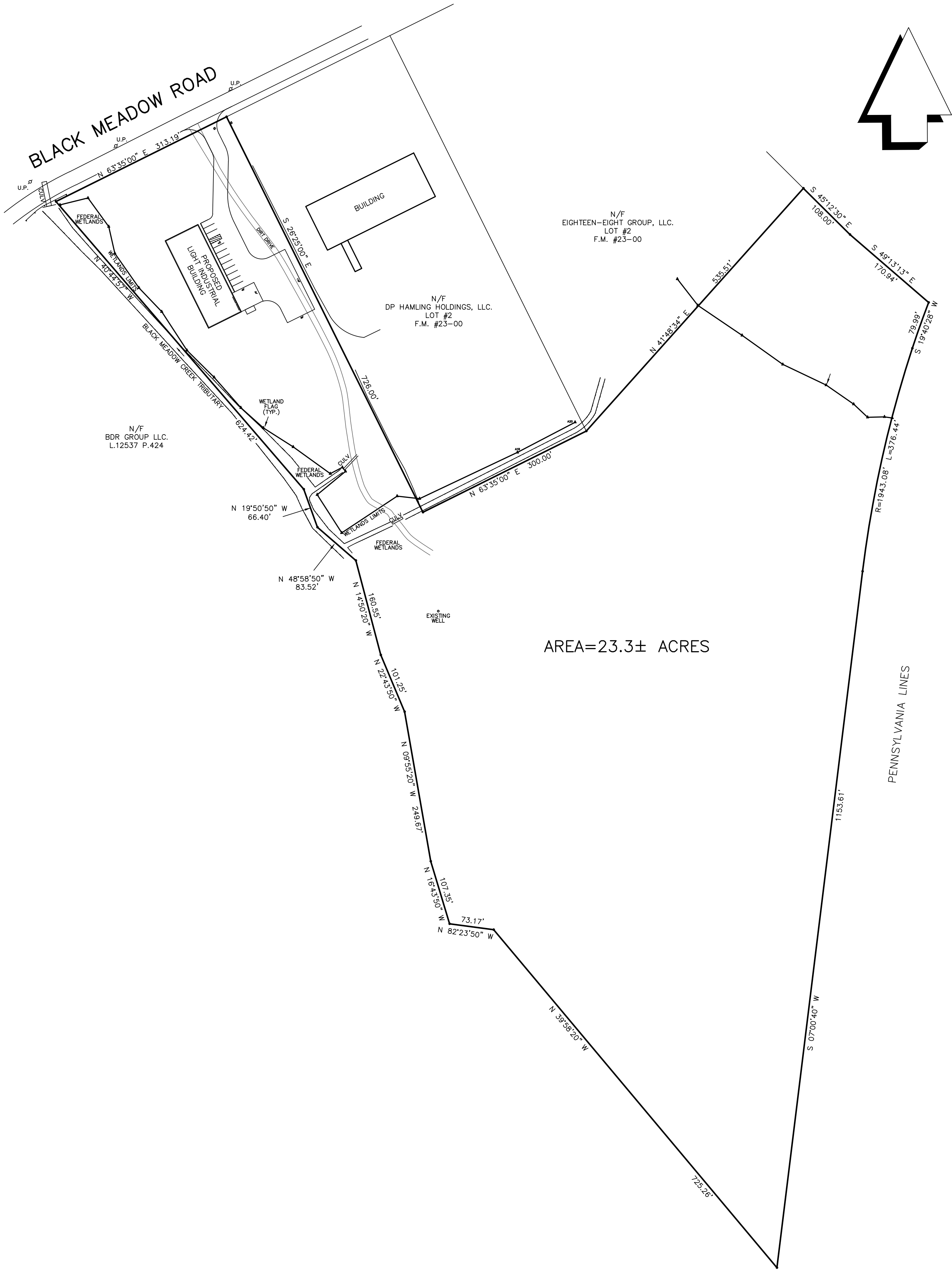


UNAUTHORIZED ALTERATION OF THIS DOCUMENT, IN ANY WAY, CONSTITUTES A VIOLATION OF THE STATE OF NEW YORK EDUCATION LAW SECTION 7209 (2).



ZONE:IP		(INDUSTRIAL PARK)
		LIGHT INDUSTRIAL USE
	REQUIRED	SUPPLIED
MINIMUM LOT AREA	2 ACRES	23.3 ACS.
MINIMUM LOT WIDTH	200 FT.	300.4 FT.
MINIMUM FRONT YARD	50 FT.	137.9 FT.
MINIMUM SIDE YARD	50 FT.	54.5 FT.
TOTAL BOTH SIDE YARDS	100 FT.	175.3 FT.
MINIMUM REAR YARD	50 FT.	1800 FT.
MAXIMUM BLDG. COVERAGE	40%	<40%
MAXIMUM BLDG. HEIGHT	45 FT	<45 FT.

OWNER & APPLICANT:

EIGHTEEN-EIGHT GROUP LLC.
P.O. BOX 388
SUGAR LOAF NY. 10981

NOTES:

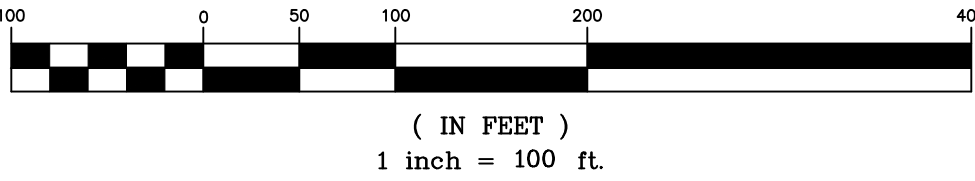
- TAX MAP DESIGNATION: SECTION 6 BLOCK 1 LOT 102
- REFERENCE: BEING LOT #3 ON MAP ENTITLED,"MINOR SUBDIVISION OF LANDS OF THE EIGHTEEN-EIGHT GROUP LLC., FILED IN THE O.C.C.O. AS FILED MAP No.23-00.
- FEDERAL WETLANDS BY PETE TORGENSEN ON MARCH 29, 2013 AND FIELD LOCATED APRIL 3, 2013, BY JAMES A. DILLIN, PLS.

PLAN VIEW
FOR
EIGHTEEN-EIGHT GROUP LLC.
TOWN OF CHESTER
SCALE: 1" = 100'
ORANGE COUNTY, N.Y.
AREA= 23.3± ACRES

FEBRUARY 16, 2016

REVISIONS	
03-29-16	REV. SHEETS 2 & 3
07-18-16	REV. SHEETS 2 & 3

GRAPHIC SCALE



STATE OF NEW YORK
JAMES A. DILLIN, PLS
PROFESSIONAL LAND SURVEYOR
GOSHEN, NEW YORK
LIC.4908