



Highlands Trail Relocation Chester, NY

Land conservation and sustainable trail-building allowed for a 1-mile section of the Highlands Trail to be moved off a road onto recently protected woodland.

The creation of a more pleasant safer trail has been popular locally, receiving media attention and much support and use by residents.



Connecting People with Nature since 1920

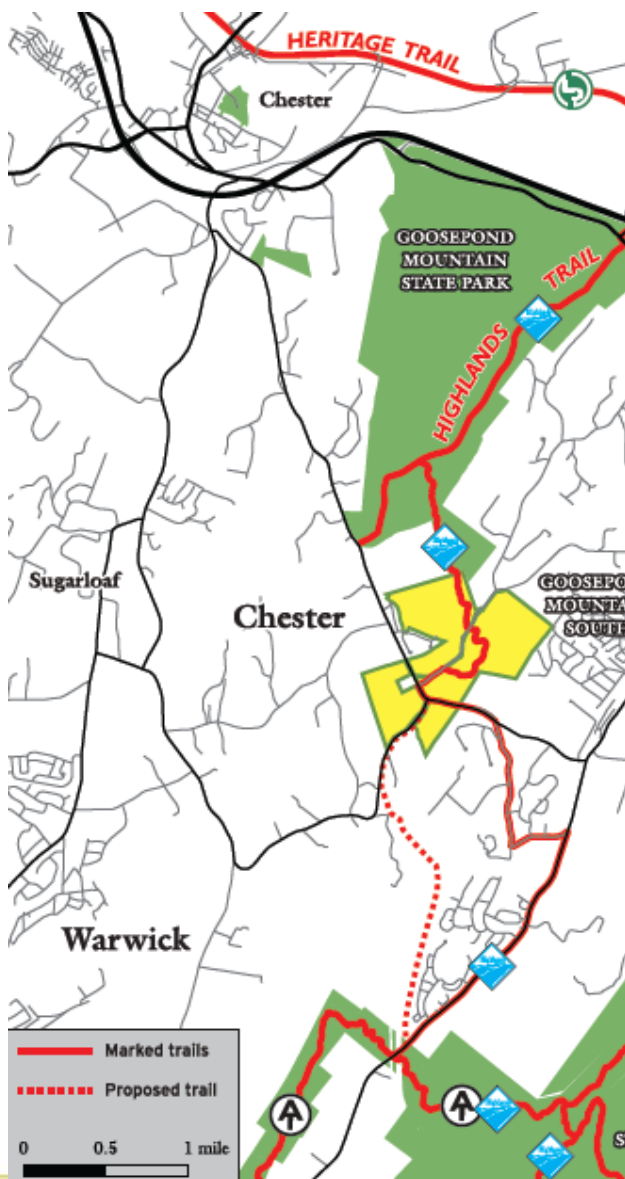
In 2015, a 400-acre parcel adjacent to Goose Pond Mountain State Park was preserved, soon after a parking lot was constructed and over 1-mile of trail was cleared and built on that property, ending at the state park boundary.



The following year the new land was transferred to state parks, and became part of Goosepond Mountain State Park. A final trail link scouted and approved on existing park land.

In 2018 trail building commenced and linked the new trail section to the existing route in the park on Lazy Hill road.

Location





Participants

Connecting People with Nature since 1920

The trail relocation project generated a great deal of local participation. Volunteers helped clear the corridor and remove invasive plant species. They did side-hilling work, and constructed a stepping-stone bridge and bog-bridge over a seasonally-wet area.



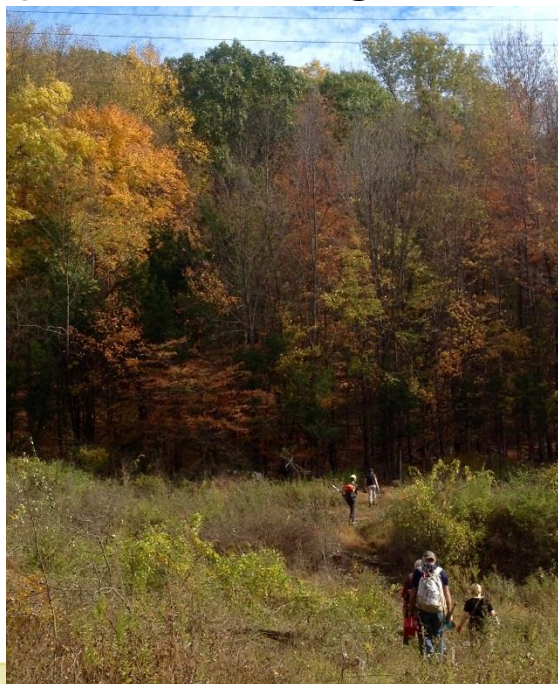


Achievements

Connecting People with Nature since 1920



From beginning to end, over 2 miles of new single-track trail was constructed by over 100 people, volunteering 686 hours of their time





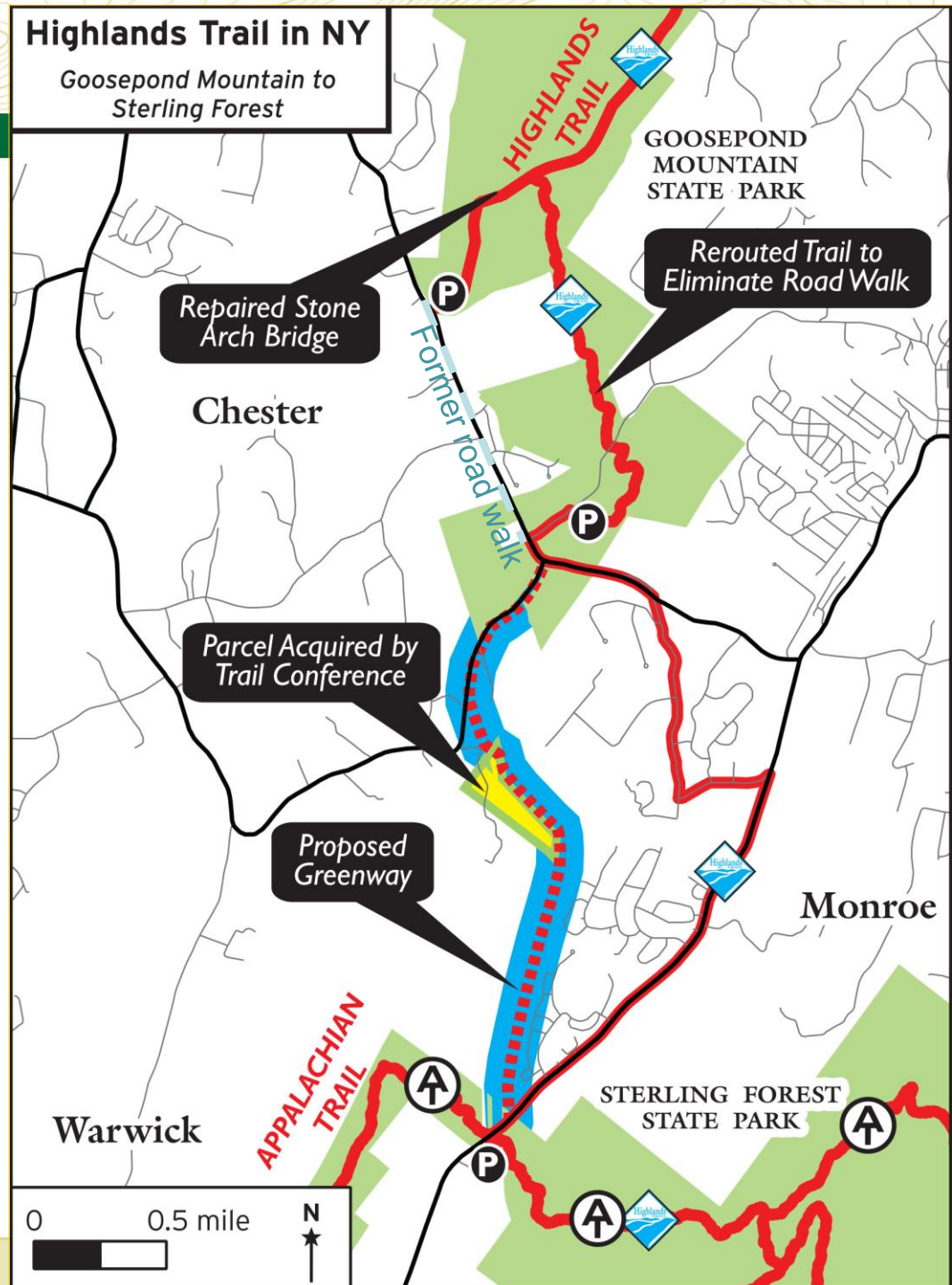
Connecting People with Nature since 1920

Recent achievements



Highlands Trail in NY

Goosepond Mountain to
Sterling Forest



GOOSEPOND
MOUNTAIN
STATE PARK

Rerouted Trail to
Eliminate Road Walk

Repaired Stone
Arch Bridge

Chester

Parcel Acquired by
Trail Conference

Proposed
Greenway

Monroe

Warwick

STERLING FOREST
STATE PARK

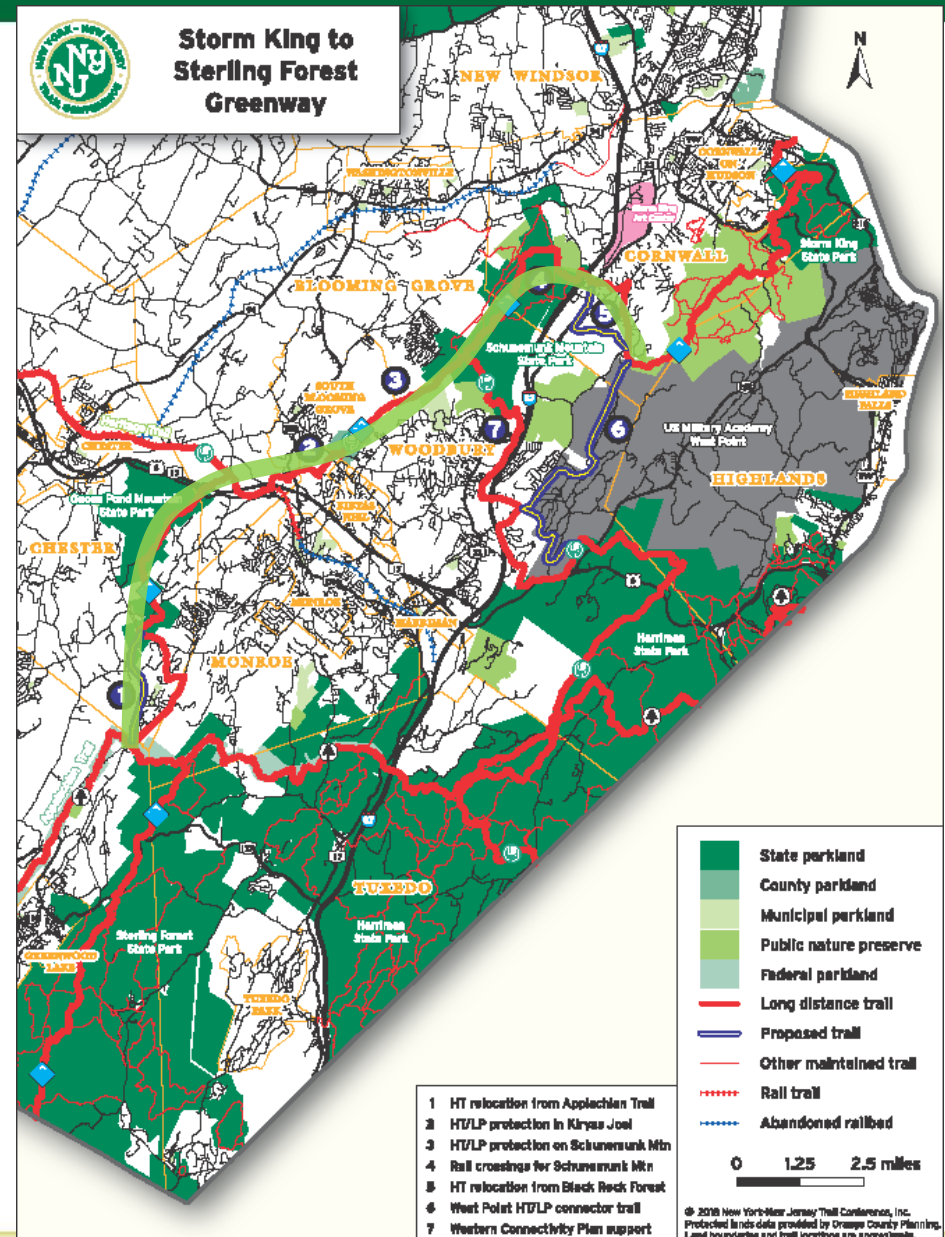
0 0.5 mile

N

The Dream:

A GREENWAY connecting

isolated
parks





Connecting People with Nature since 1920

Earth Day weekend

April 21 2018

Goosepond Mountain
State Park, NY



Photo credit: Robert Celestin



Connecting People with Nature since 1920



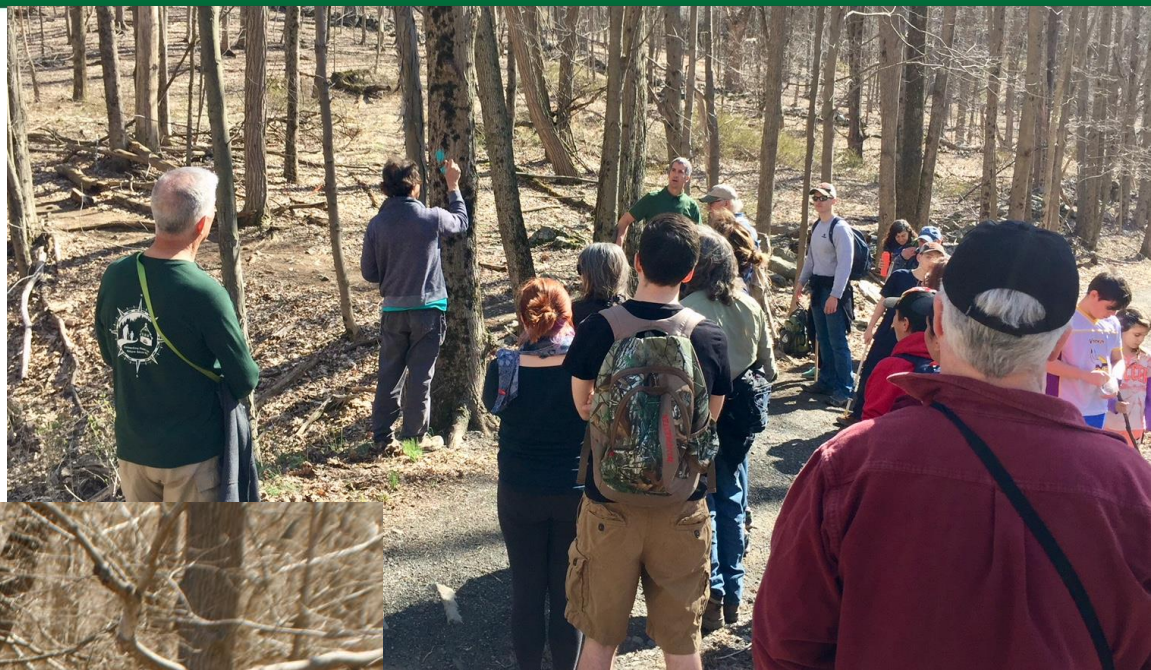
Photo credit: Henry Smith, AIP



Photo credit: Robert Celestin



Connecting People with Nature since 1920





Schall Family memorial bench

Seely Bridge Repair





Connecting People with Nature since 1920



Volunteer with us!

volunteer@nynjtc.org

Support us!

nynjtc.org/donate



Photo credit: Diane Rosen