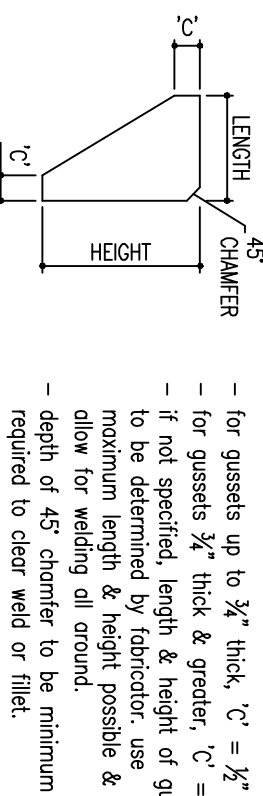


NOTES

- 1) Footing design based on soil conditions of medium stiff clay, or better. (allowable soil pressure = 250 p.s.i. / ft. depth)
Notify Engineer if other than these conditions exist.
- 2) Provide 1/2" cap plates for end of torsion pipe. Cap plates to be welded, all around, to pipe.
- 3) Attached catwalks using 3/8" J-Bolts (1 req'd/conn.)
- 4) Catwalks grating to be 3.14 p.s.i. expanded metal grating. (weld to catwalk angles with 1/2" fillet weld, 1" lg. @ 12" c/c)

TYPICAL GUSSET DETAIL

USE THIS CRITERIA FOR ALL GUSSETS

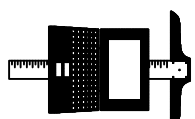


GENERAL NOTES

- ALL NUTS AND BOLTS ARE TO BE ZINC PLATED. (except A-480 bolts, which are not to be plated, but primed and painted after installation)
- THE FABRICATOR SHALL VERIFY ALL DIMENSIONS AND CONDITIONS IN FIELD BEFORE ANY WELDING OR CUTTING OF MATERIALS
- ANY DEVIATIONS FROM THIS PRINT MUST BE APPROVED BY ENGINEER.
- STRUCTURAL STEEL SHAPES & PLATES SHALL CONFORM TO THE REQUIREMENTS OF A.S.T.M. A-36, and WIDE FLANGES TO A.S.T.M. A492.
- (except structural tubing, which shall conform to A-500, grade B) OR A-552, GRADE 2; UNLESS OTHERWISE NOTED.
- ALL STRUCTURAL STEEL SHALL BE PROTECTIVELY COATED, AS DIRECTED BY ENGINEER.
- ALL WELDING SHALL BE IN ACCORDANCE WITH A.W.S. STANDARDS, WELDING TO BE PERFORMED BY CERTIFIED WELDERS USING E-70 ELECTRODES.
- CONCRETE SHALL ATTAIN A MINIMUM COMPRESSIVE STRENGTH OF Fc = 3000 p.s.i. IN 28 DAYS, UNLESS OTHERWISE NOTED.
- CONTRACTOR TO ENSURE THAT ALL WORK IS PERFORMED IN ACCORDANCE WITH FEDERAL, STATE & LOCAL CODES & ORDINANCES, AND OSHA SAFETY REGULATIONS.
- WALKWAYS, PROMENADE, AND OTHER APPROVED FLEXIBLE LIFTING SYSTEM FOR ALL LOADERS), CROSSOVER/WALK-AROUND CATWALKS, etc.)
- VERIFY CORRECT STRINGER SPACING WITH OWNER PRIOR TO FABRICATION.
- F.A.S.L. = Height Above Ground Level

APPLICABLE BUILDING CODE AND WIND SPEED:

2014 NY Bldg. Code/2102 IBC. (115 mph – Exp. C) – Cat. II



Effective Engineering Solutions, LTD.
61 White Water Court
New Lenox, IL 60451
(815) 485-1470

PROJECT: 12' x 36' Centremount ~ Back to Back Sign Structure @ 35'-0" Overall Height

CLIENT:

Eagle Tubular Products, Inc.

THIS PRINT CONTAINS PROPRIETARY INFORMATION AND SHALL NOT BE USED, REPRODUCED, OR ITS CONTENTS DISCLOSED, IN WHOLE OR IN PART, WITHOUT WRITTEN CONSENT FROM THE ABOVE CLIENT.
THE UNDERSIGNED ENGINEER WILL NOT SUPERVISE THE FABRICATION AND ERECTION OF THIS STRUCTURE.

ARTIST SEAL:

LOCATION:

Chester, NY

ENGINEERED BY:

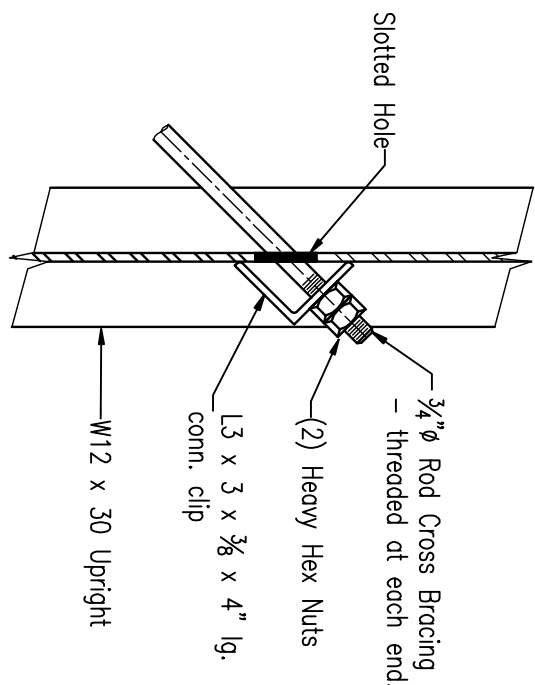
CWL

DRAWN BY:

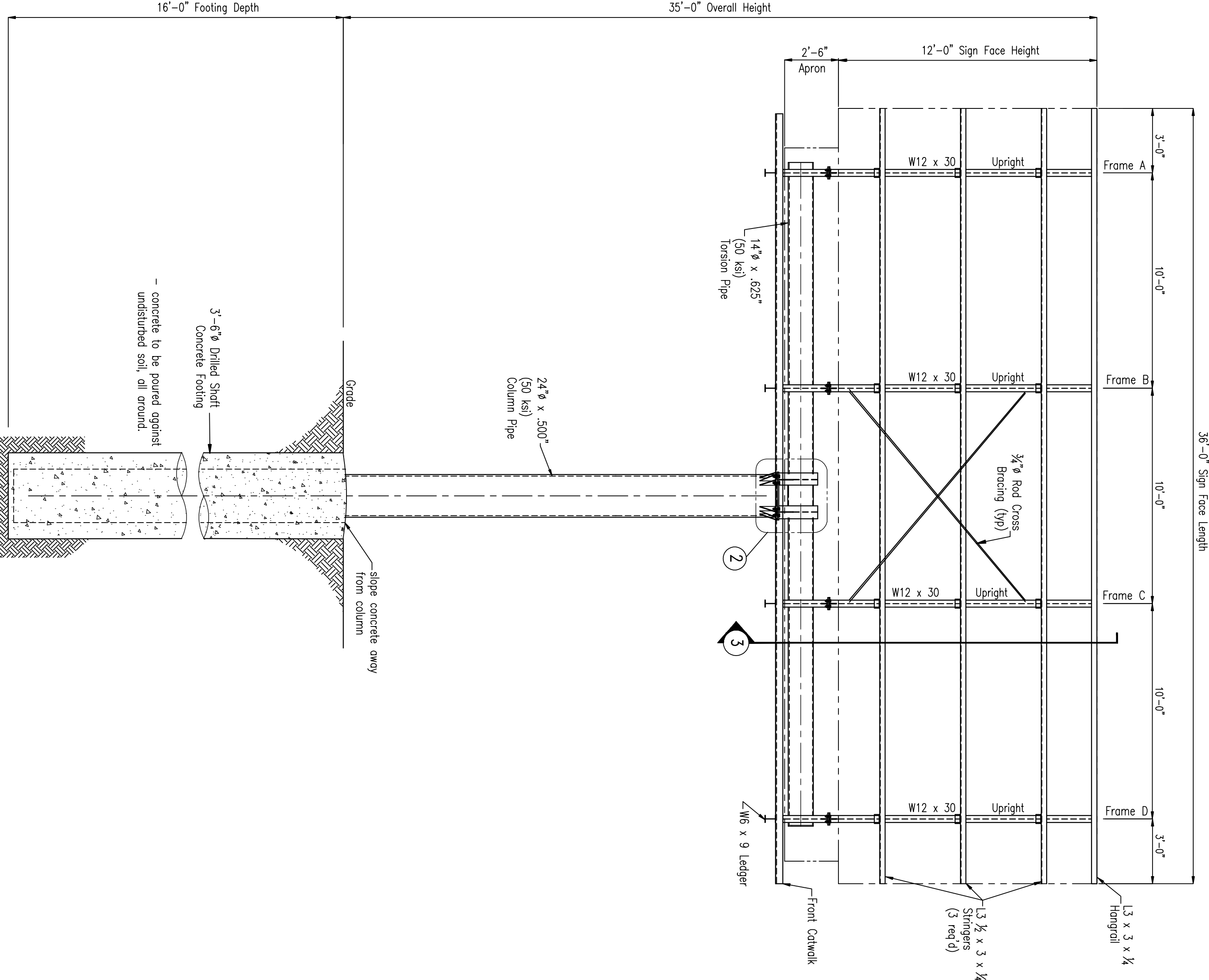
DBM

DATE DRAWN: 3/2/2018

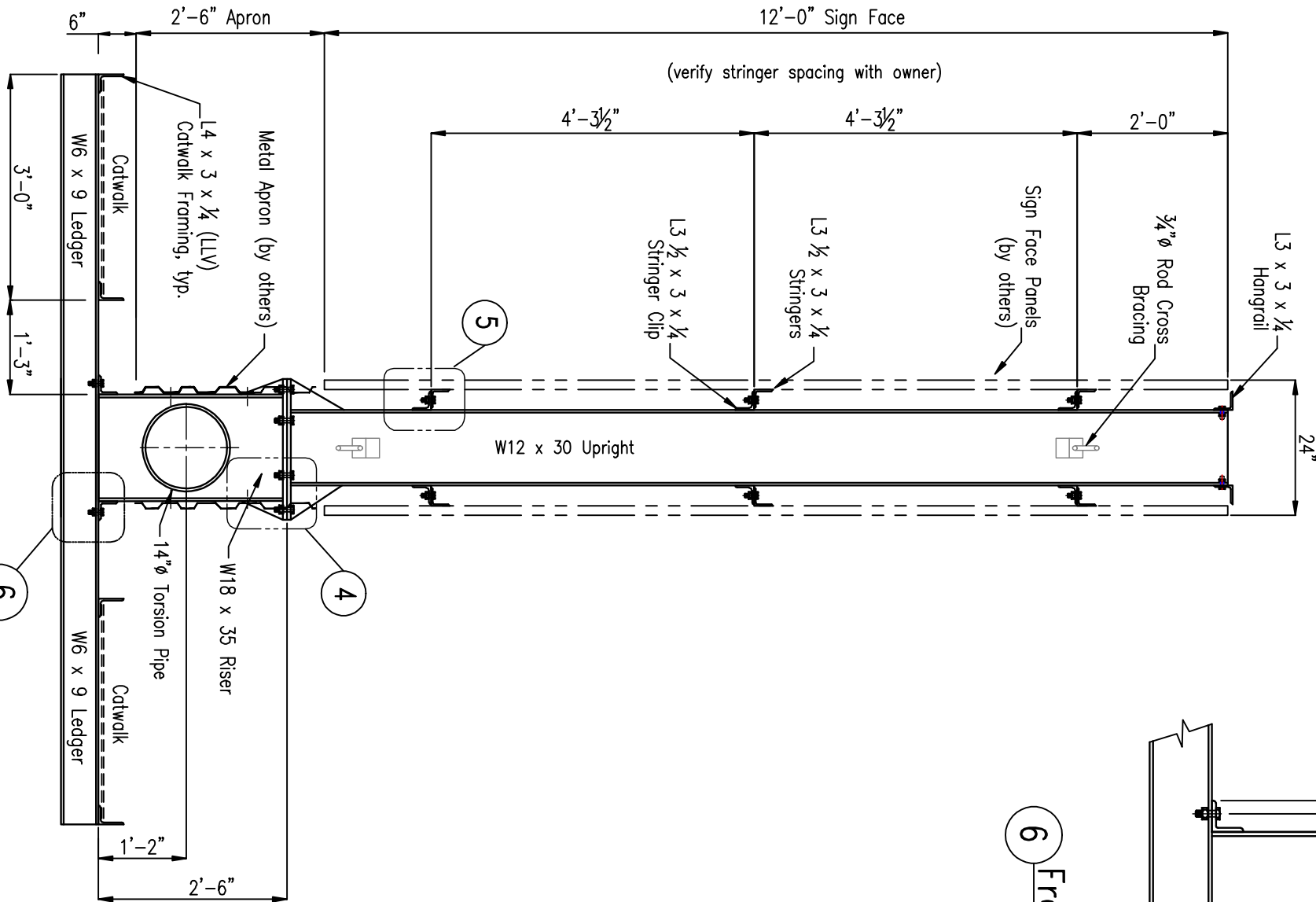
DRAWING NO: 72967



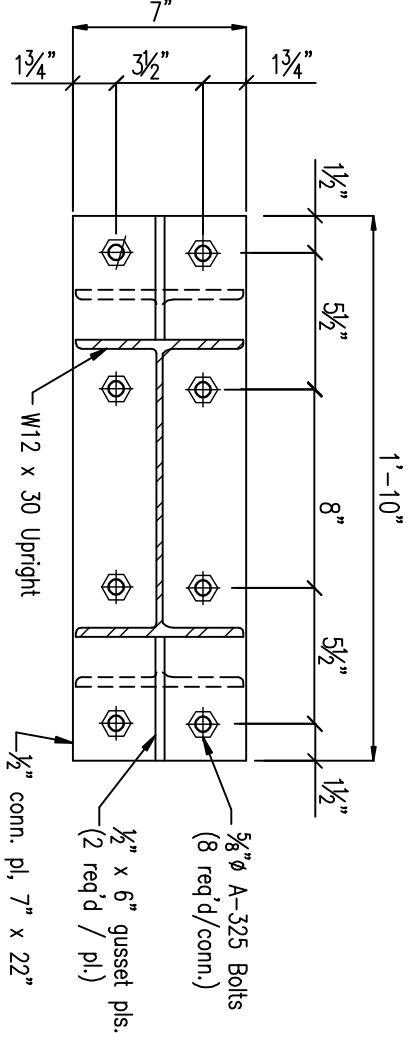
7 Cross Brace Detail



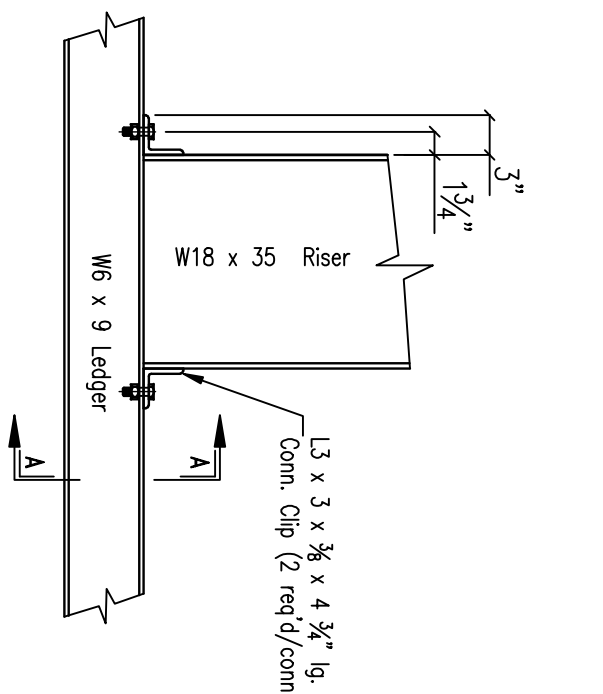
1 Front Elevation



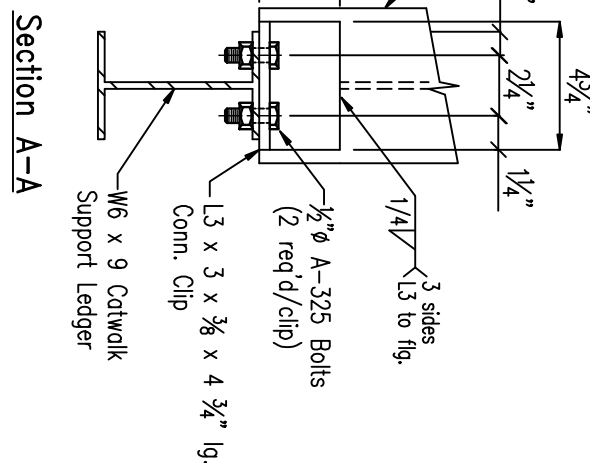
3 Frame Detail



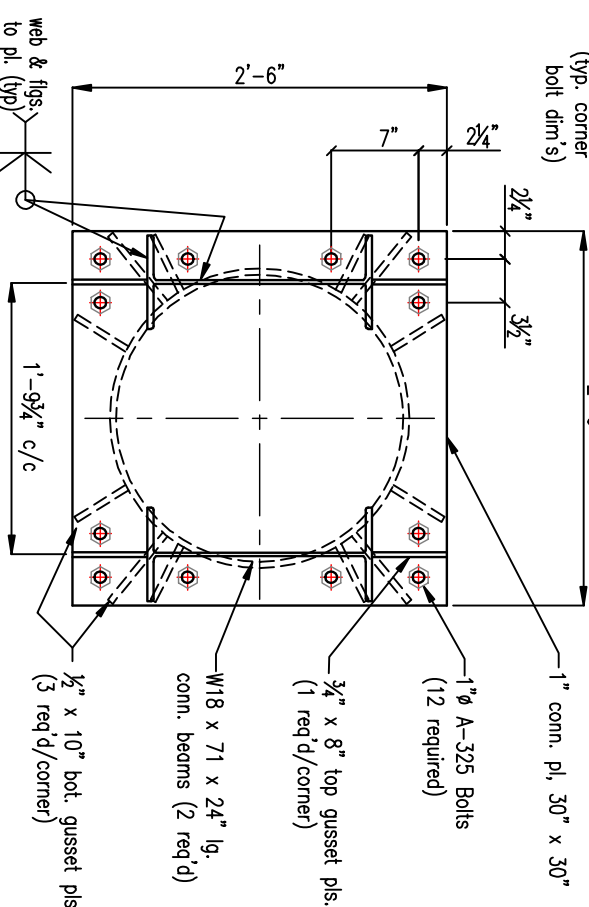
Section B-B



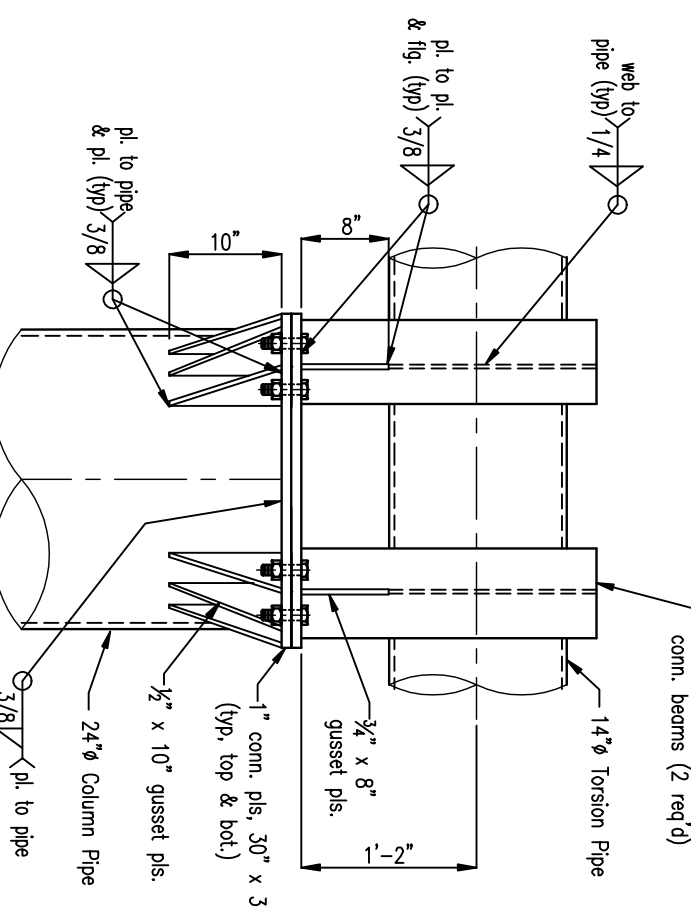
6 Front Ledger Connection



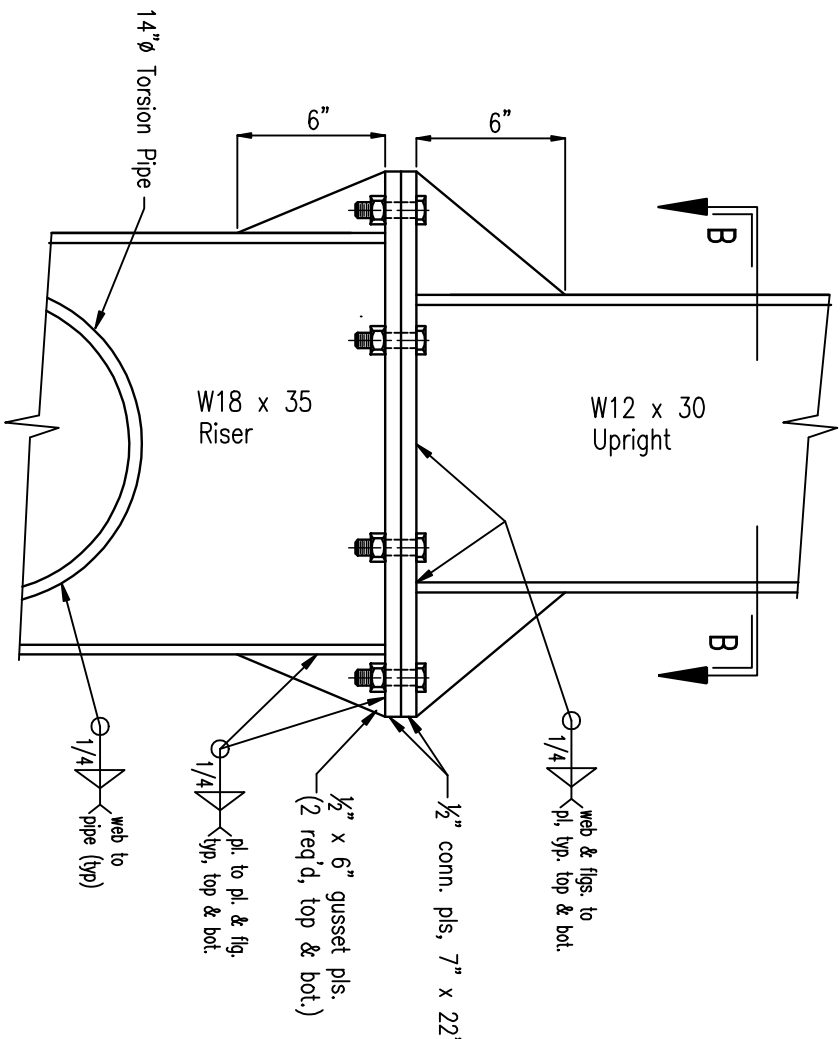
Section A-A



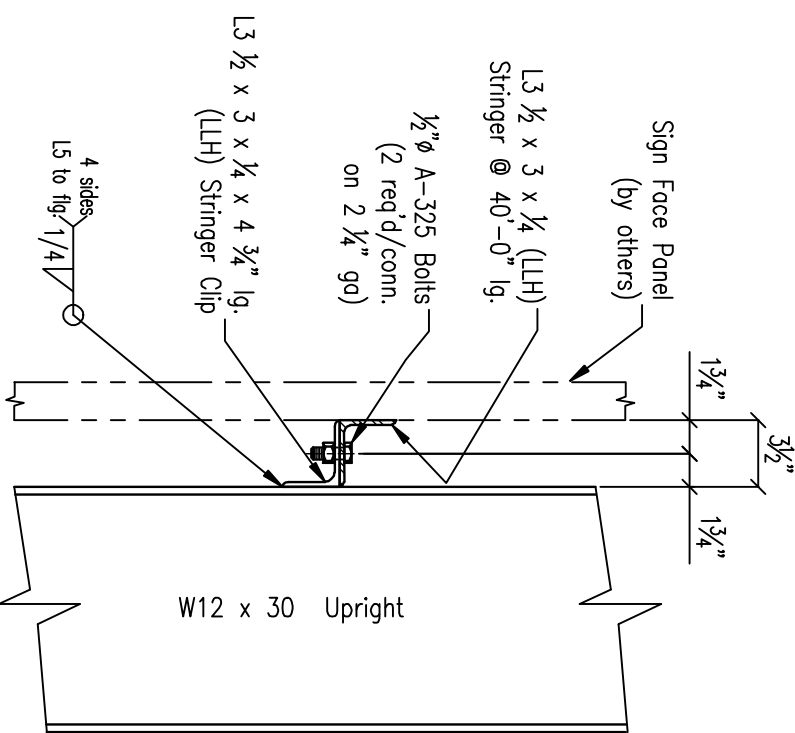
Plan View



2 Column Connection



4 Upright Connection



5 Stringer Connection