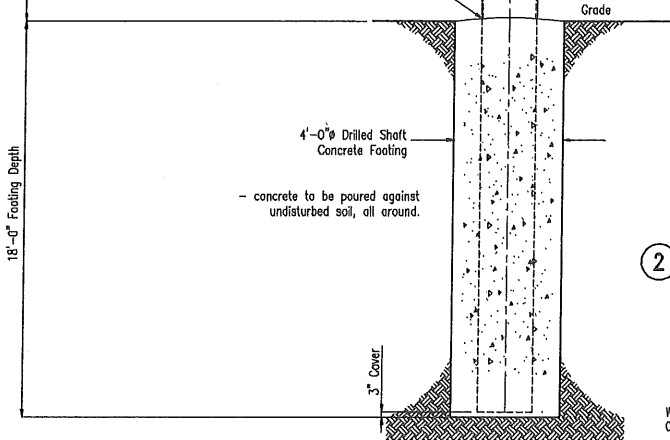
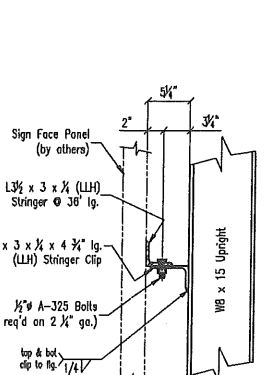


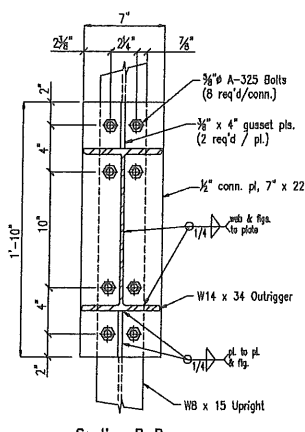
1 Plan View



2 Front Elevation



5 Stringer Connection



Section C-C

Section C-C

Section C-C

Section C-C

Section C-C

Section C-C

Section C-C

Section C-C

Section C-C

Section C-C

Section C-C

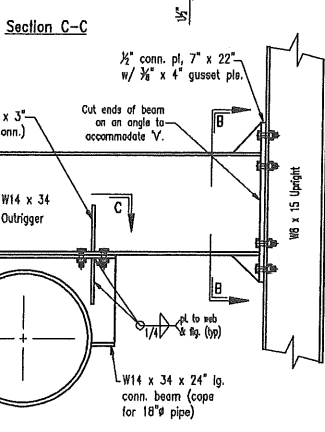
Section C-C

Section C-C

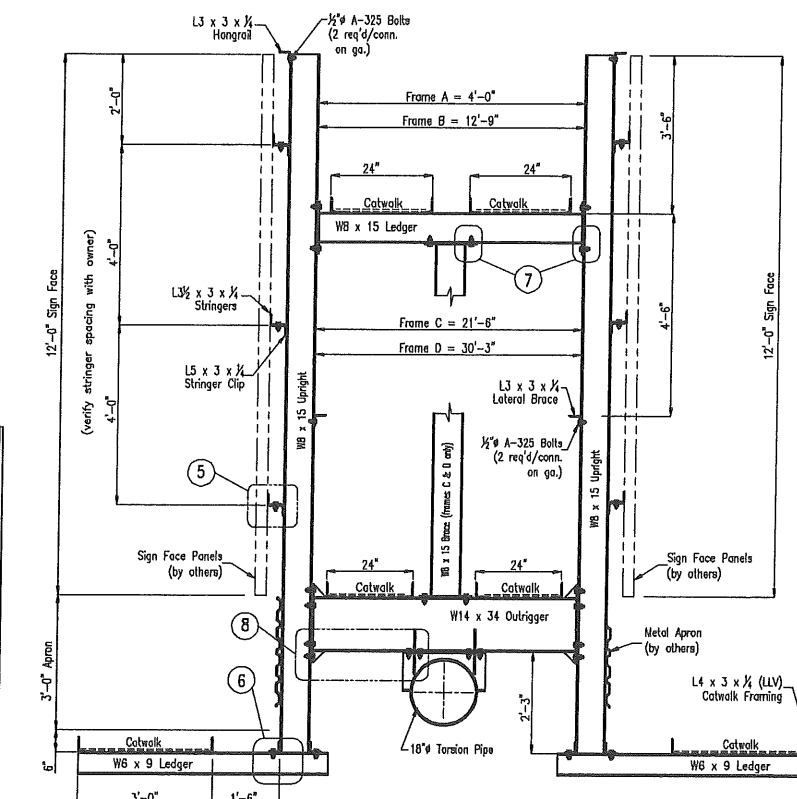
Section C-C

Section C-C

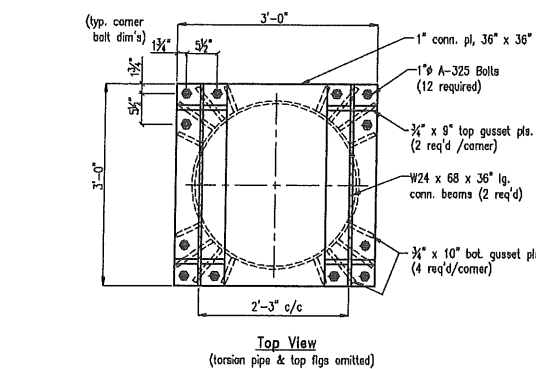
Section C-C



8 Outrigger & Upright Connection



3 Frame Detail



Top View

Top View

Top View

Top View

Top View

Top View

Top View

Top View

Top View

Top View

Top View

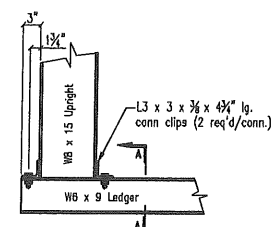
Top View

Top View

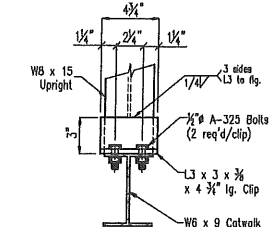
Top View

Top View

Top View



6 Front Ledger Connection



Section A-A

Section A-A

Section A-A

Section A-A

Section A-A

Section A-A

Section A-A

Section A-A

Section A-A

Section A-A

Section A-A

Section A-A

Section A-A

Section A-A

Section A-A

Section A-A

Section A-A

Section A-A

Section A-A

Section A-A

Section A-A

Section A-A

Section A-A

Section A-A

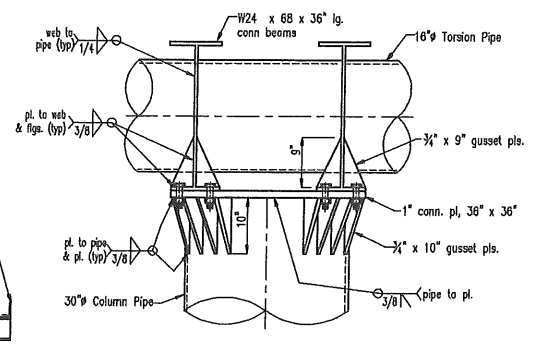
Section A-A

Section A-A

Section A-A

Section A-A

Section A-A



4 Column Connection

NOTES

- 1) Footing design based on soil conditions of medium stiff clay, or better. (allowable soil pressure = 250 p.s.f. / ft. depth) Notify Engineer if other than these conditions exist.
- 2) Provide 1/4" cap plates for end of torsion pipe. Cap plates to be welded, all around, to pipe.
- 3) Attached catwalks using 1/2" J-Bolts (1 req'd/conn.)
- 4) Catwalks grating to be 3.14 p.s.f. expanded metal grating. (weld to catwalk angles with 1/4" fillet weld, 1" lg. @ 12" c/c)

STATE OF NEW YORK
CLIFFORD W. LEVERENZ
LICENSED PROFESSIONAL ENGINEER
 004253-1

1/31/18

TYPICAL GUSSET DETAIL

USE THIS CRITERIA FOR ALL GUSSETS

LENGTH 45° CHAMFER

HEIGHT

3"

1"

1/4"

1/2" A-325 Bolts (2 req'd/clip)

L3 x 3 x 1/4 x 4 3/4" lg. Clip

WB x 9 Catwalk Support Ledger

GENERAL NOTES

- ALL NUTS AND BOLTS ARE TO BE ZINC PLATED, (except A-490 bolts, which are not to be plated, but primed and painted after installation)
- THE CONTRACTOR SHALL VERIFY ALL DIMENSIONS AND CONDITIONS IN FIELD BEFORE FABRICATION OR CONSTRUCTION, AND NOTIFY ENGINEER OF ANY DISCREPANCIES
- ANY DEVIATIONS FROM THIS PRINT MUST BE APPROVED BY ENGINEER.
- STRUCTURAL STEEL SHAPES & PLATES SHALL CONFORM TO THE REQUIREMENTS OF A.S.T.M. A-36, AND WIDE FLANGES TO A.S.T.M. A592.
- (except structural tubing, which shall conform to A-500, grade B)
- ALL STEEL PIPE SHALL CONFORM TO THE REQUIREMENTS OF A.S.T.M. A-53, GRADE B OR A-252, GRADE 2; UNLESS OTHERWISE NOTED.
- ALL STRUCTURAL STEEL SHALL BE PRODUCED, FABRICATED, AND ERECTED IN ACCORDANCE TO THE LATEST A.I.S.C. SPECIFICATIONS AND STANDARD PRACTICES.
- ALL WELDING SHALL BE IN ACCORDANCE WITH A.W.S. STANDARDS. WELDING TO BE PERFORMED BY CERTIFIED WELDERS USING E-70 ELECTRODES.
- CONCRETE SHALL ATTAIN A MINIMUM COMPRESSIVE STRENGTH OF $f_c = 3000$ p.s.i. IN 28 DAYS, UNLESS OTHERWISE NOTED.
- CONTRACTOR TO ENSURE THAT ALL WORK IS PERFORMED IN ACCORDANCE WITH FEDERAL, STATE, & LOCAL CODES & ORDINANCES; AND O.S.H.A. SAFETY REGULATIONS.
- VERIFY WITH OWNER ALL SIGN HEAD ACCESS REQUIREMENTS. (i.e. COLUMN & ACCESS LADDER(S), CROSSOVER/WALK-AROUND CATWALKS, etc.)
- VERIFY CORRECT STRINGER SPACING WITH OWNER PRIOR TO FABRICATION.
- H.A.G.L. = Height Above Ground Level

APPLICABLE BUILDING CODE AND WIND SPEED:
 2014 NY Bldg. Code/2102 I.B.C. (115 mph - Exp. C) - Cat. II

Effective Engineering Solutions, LTD.
 61 White Water Court
 New Lenox, IL 60451
 (815) 485-1470

PROJECT:
 12' x 36' Centermount
 35' 'V' Sign Structure @ 40'-0" Overall Height

CLIENT:
 Eagle Tubular Products, Inc.

THIS PRINT CONTAINS PROPRIETARY INFORMATION AND SHALL NOT BE USED, REPRODUCED, OR ITS CONTENTS DISCLOSED, IN WHOLE OR IN PART, WITHOUT WRITTEN CONSENT FROM THE ABOVE CLIENT.

THE UNDERSIGNED ENGINEER WILL NOT SUPERVISE THE FABRICATION AND ERECTION OF THIS STRUCTURE.

AFFIX SEAL:

LOCATION:
 Chester, NY

ENGINEERED BY:
 CWL

DRAWN BY:
 DBM

DATE DRAWN:
 9/6/2016

DRAWING NO:
 1 of 1

71123