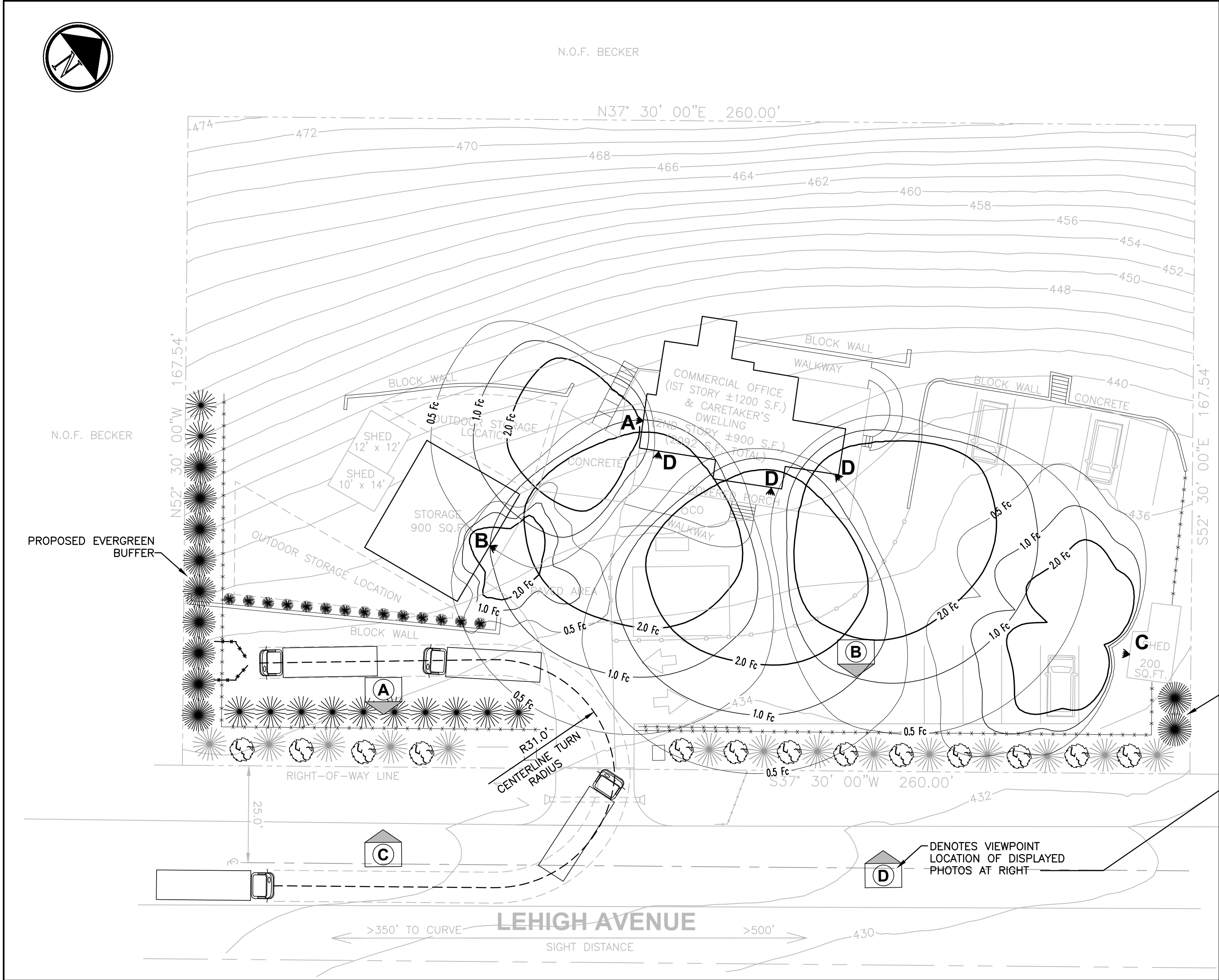


File Name: F:\2018\18-055 Werberger Site Plan\DWG\C-601.dwg
Date: Mon, Sep 17, 2018 - 2:21 PM (Name: sar)



1 SITE LIGHTING & LANDSCAPING PLAN
1" = 20'

LEGEND & SCHEDULE OF SITE LIGHTING FIXTURES			
SYMBOL	MANUFACTURER	MODEL#	DESCRIPTION
A	E-CONOLIGHT	E-HL8F15N2Z	LED FLOOD LIGHT, WALL MOUNTED 14' A.F.G., 13,200 LUMENS
B	E-CONOLIGHT	E-WFT04A-N40Z	LED WALL-PACK, 4,600 LUMENS, MOUNTED 12' A.F.G.
C	E-CONOLIGHT	E-GL5MFL07N2Z	LED DUAL FIXTURE SPOT FLOOD LIGHT, 10'A.F.G., 7,600 LUMENS (PER FIXTURE).
D	E-CONOLIGHT	E-FFA26A-TW40Z	(4)LED AREA LIGHT, WALL MOUNTED 19' A.F.G., 26,500 LUMENS

GENERAL PLANTING NOTES:

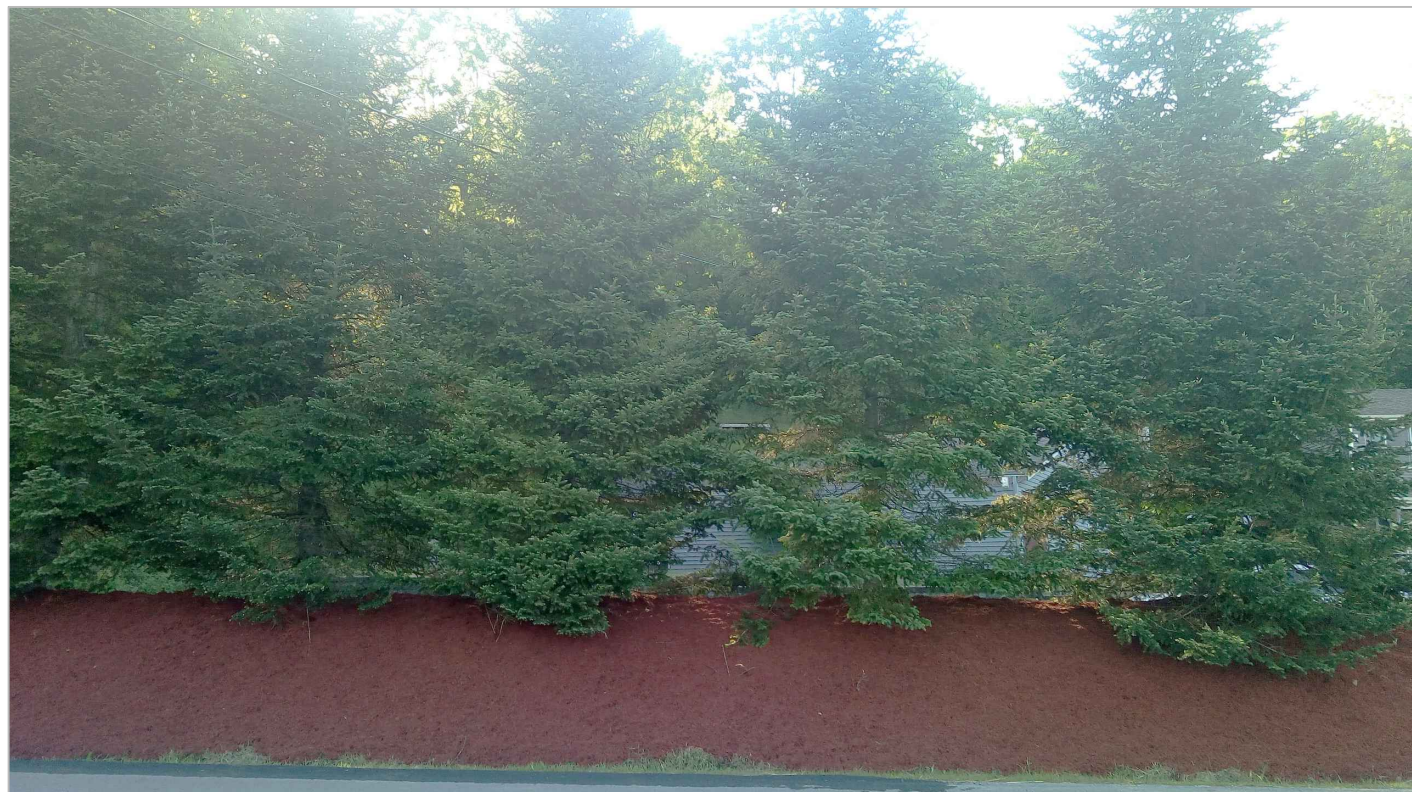
- PLANT MATERIAL SHALL BE GUARANTEED FOR ONE YEAR AFTER FINAL ACCEPTANCE OF PROJECT PLANTING. DEAD, DYING, UNHEALTHY AND/OR PLANTS IN POOR CONDITION SHALL BE REPLACED IN THE SAME PLANTING SEASON THAT THE LANDSCAPE ARCHITECT HAS DEEMED THE PLANT UNACCEPTABLE. PLANTINGS THAT REQUIRE REPLACEMENT SHALL BE REMOVED AND REPLACED AT NO ADDITIONAL COST TO THE OWNER.
- EXISTING VEGETATION AREAS DISTURBED BY CONSTRUCTION ACTIVITIES SHALL BE TOPSOILED AND SEEDING UPON COMPLETION OF WORK.
- NEW PLANTING ROOT BALLS REMOVED FROM CANS SHALL BE SCARIFIED PRIOR TO BACKFILLING THE PLANT.
- ALL PLANTINGS SHOWN ON APPROVED SITE DEVELOPMENT PLAN OR SPECIAL PERMIT PLAN SHALL BE MAINTAINED IN A VIGOROUS GROWING CONDITION THROUGHOUT THE DURATION OF USE AND PLANTS NOT SO MAINTAINED SHALL BE REPLACED WITH NEW PLANTS AT THE BEGINNING OF THE NEXT IMMEDIATELY FOLLOWING GROWING SEASON.
- FOR PLANTING OPERATION, STANDARDS AND MATERIALS SEE SPECIFICATIONS.
- CONTRACTOR SHALL FAMILIARIZE HIM/HERSELF WITH THE LIMITS OF WORK AND EXISTING CONDITIONS AND VERIFY ALL INFORMATION. IF DISCREPANCIES EXIST, CONTRACTOR SHALL NOTIFY OWNER'S REPRESENTATIVE IN WRITING WITHIN SEVEN (7) CALENDAR DAYS OF NOTICE TO PROCEED.
- CONTRACTOR SHALL VERIFY LOCATIONS OF ALL UNDERGROUND UTILITIES AND OBTAIN AS-BUILT INFORMATION. DRAWINGS WERE PREPARED ACCORDING TO THE BEST INFORMATION AVAILABLE AT THE TIME. CONTRACTOR SHALL NOTIFY OWNER'S REPRESENTATIVE IN WRITING WITHIN SEVEN (7) CALENDAR DAYS OF NOTICE TO PROCEED OF ANY DISCREPANCIES.
- CONTRACTOR SHALL NOTIFY ALL NECESSARY UTILITY COMPANIES 48 HOURS MINIMUM PRIOR TO DIGGING FOR VERIFICATION OF ALL UNDERGROUND UTILITIES AND OTHER OBSTRUCTIONS AND COORDINATE WITH OWNER'S REPRESENTATIVE IN WRITING PRIOR TO INITIATING OPERATIONS.
- TYPICALLY, SHRUB AND GROUNDCOVER PLANTINGS ARE SHOWN AS MASS PLANTING BEDS. PLANTS SHALL BE PLACED ON A TRIANGULAR SPACING CONFIGURATION (STAGGERED SPACING). PLANT CENTER TO CENTER DIMENSIONS (O.C.) ARE LISTED ON THE PLANT LIST.
- CONTRACTOR SHALL FIELD STAKE THE LOCATIONS OF ALL PLANT MATERIAL PRIOR TO INITIATING INSTALLATION FOR THE REVIEW AND APPROVAL OF THE OWNER'S REPRESENTATIVE AND/OR LANDSCAPE ARCHITECT.
- CONTRACTOR SHALL FIELD ADJUST LOCATION OF PLANT MATERIAL AS NECESSARY TO AVOID DAMAGE TO ALL EXISTING UNDERGROUND UTILITIES AND/OR EXISTING ABOVE GROUND ELEMENTS. ALL CHANGES REQUIRED SHALL BE COMPLETED AT THE CONTRACTOR'S EXPENSE AND SHALL BE COORDINATED WITH THE OWNER'S REPRESENTATIVE AND THE LANDSCAPE ARCHITECT.
- ALL TREES PLANTED IN LAWN AREA SHALL RECEIVE A 4' DIAMETER MULCH RING AT A DEPTH OF 4" AS PER THE SPECIFICATIONS.
- PLANT LIST QUANTITIES ARE PROVIDED FOR CONVENIENCE. IN THE EVENT OF QUANTITY DISCREPANCIES, THE DRAWING SHALL TAKE PRECEDENCE. ANY DISCREPANCIES SHALL BE BROUGHT TO THE ATTENTION OF THE LANDSCAPE ARCHITECT.
- CONTRACTOR SHALL REFER TO THE LANDSCAPE PLANTING DETAILS, PLANT LIST, GENERAL NOTES AND SPECIFICATIONS FOR FURTHER AND COMPLETE INSTRUCTIONS.



VIEW "A"- LOOKING FROM PROPERTY TOWARDS LEHIGH AVE.



VIEW "B"- LOOKING FROM PROPERTY TOWARDS LEHIGH AVE.

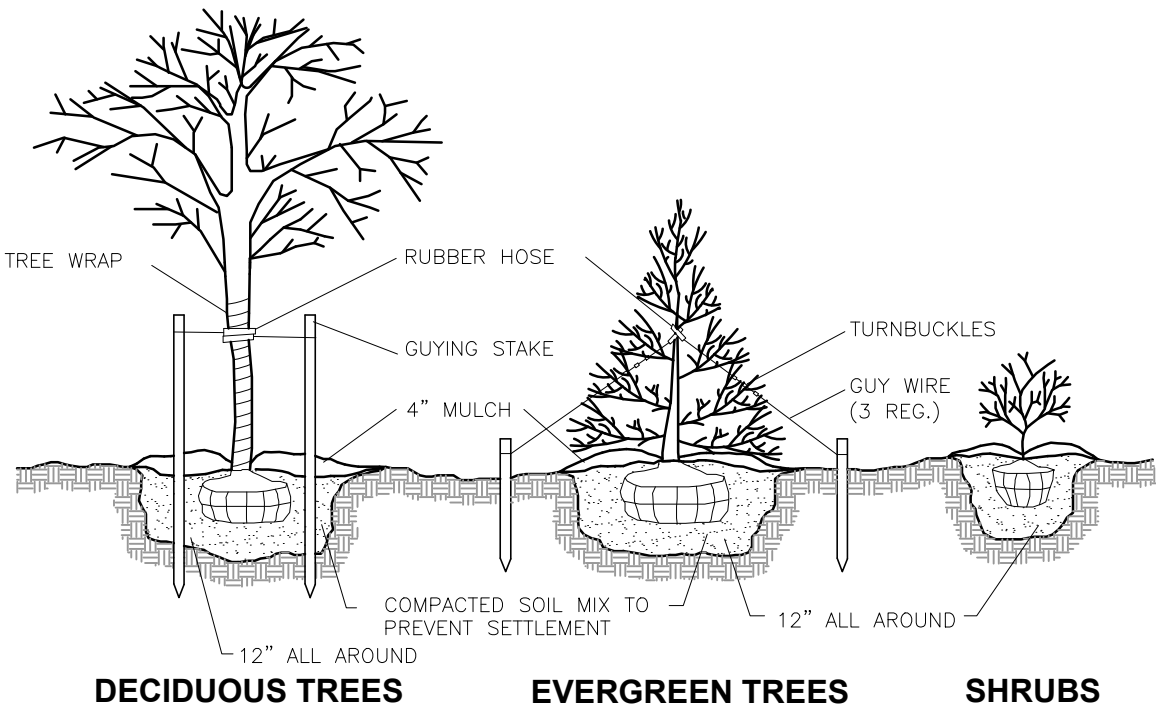


VIEW "C"- LOOKING FROM LEHIGH AVE. TOWARDS PROPERTY



VIEW "D"- LOOKING FROM LEHIGH AVE. TOWARDS PROPERTY

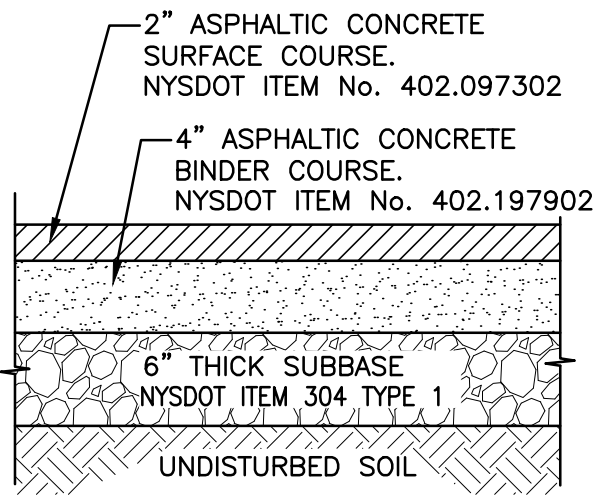
PLANT SCHEDULE						
SYMBOL	TYPE	QTY.	BOTANICAL NAME	COMMON NAME	MINIMUM SIZE	SPACING
	EVERGREEN	23	Picea Abies	Norway Spruce	7' - 8' HEIGHT	8' O.C.
	EVERGREEN	13	Tsuga canadensis 'Pendula'	Weeping Canadian Hemlock	36" spread	AS SHOWN ON PLAN
	DECIDUOUS SHRUB	14	Forsythia x Intermedia	Spring Glory Forsythia	36-48" HEIGHT	5' O.C.



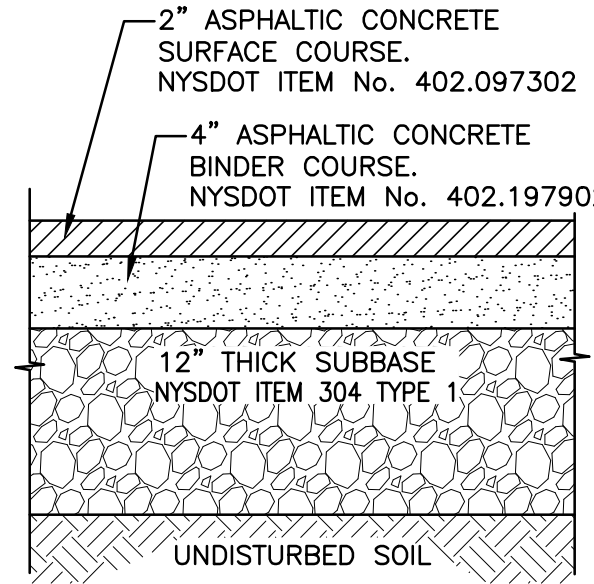
2 PLANTING & GUYING DETAIL
N.T.S.

4	09/13/18	REVISED PER TOWN COMMENTS			
3	09/06/18	REVISED PER TOWN COMMENTS			
2	07/31/18	REVISED PER TOWN COMMENTS			
1	06/14/18	REVISED PER TOWN COMMENTS			
REV #	DATE	REMARKS:	ISSUE #	DATE	ISSUED FOR:
 REFERENCE SCALE					
UNAUTHORIZED ALTERATION OR ADDITION TO A PLAN BEARING A LICENSED PROFESSIONAL ENGINEER'S SEAL IS A VIOLATION OF SECTION 7209, SUB-DIVISION 2 OF THE N.Y. STATE EDUCATION LAW.					
FELLENZER ENGINEERING LLP 22 Mulberry St., Suite 2A, Middletown, NY 10940 t 845-343-1481 fx 845-343-4986 www.fellp.com 181 Church St., Suite 100, Poughkeepsie, NY 12601 t 845-454-9704 fx 855-320-8735					
MARK D. FELLENZER, P.E.		PROJECT TITLE: LEHIGH AVENUE SITE PLAN 191 LEHIGH AVENUE CHESTER, NY			
DRAWING TITLE: LIGHTING & LANDSCAPING PLAN					
DESIGNED BY: SAR	DRAWN BY: SAR	APPROVED BY PM: ACL	APPROVED BY PIC: MDF	DRAWING #: C-601	
DATE: 03/21/2018	SCALE: AS SHOWN	FE PROJECT #: 18-055	PAGE 2 OF 4		

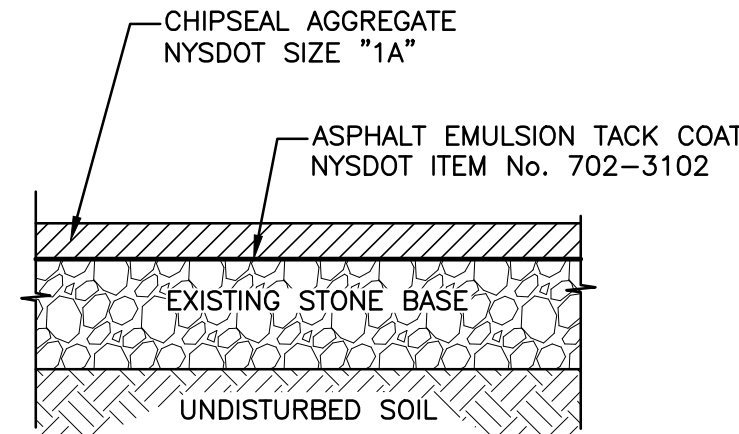




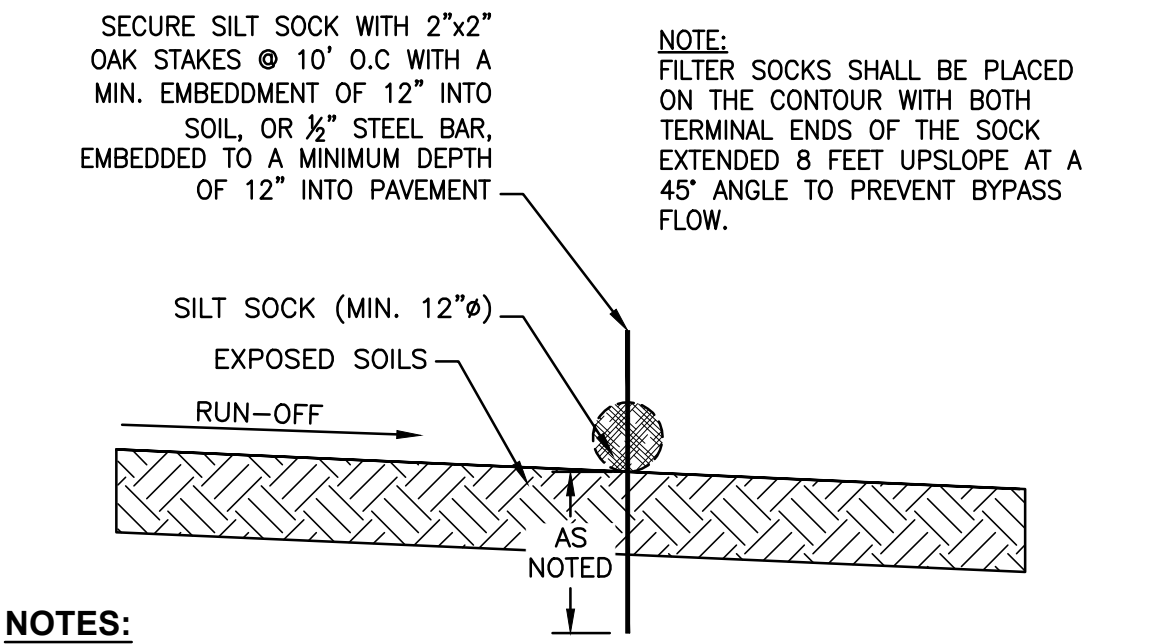
STANDARD DUTY ASPHALTIC PAVEMENT DETAIL
N.T.S.



DRIVEWAY APRON ASPHALTIC PAVEMENT DETAIL
N.T.S.

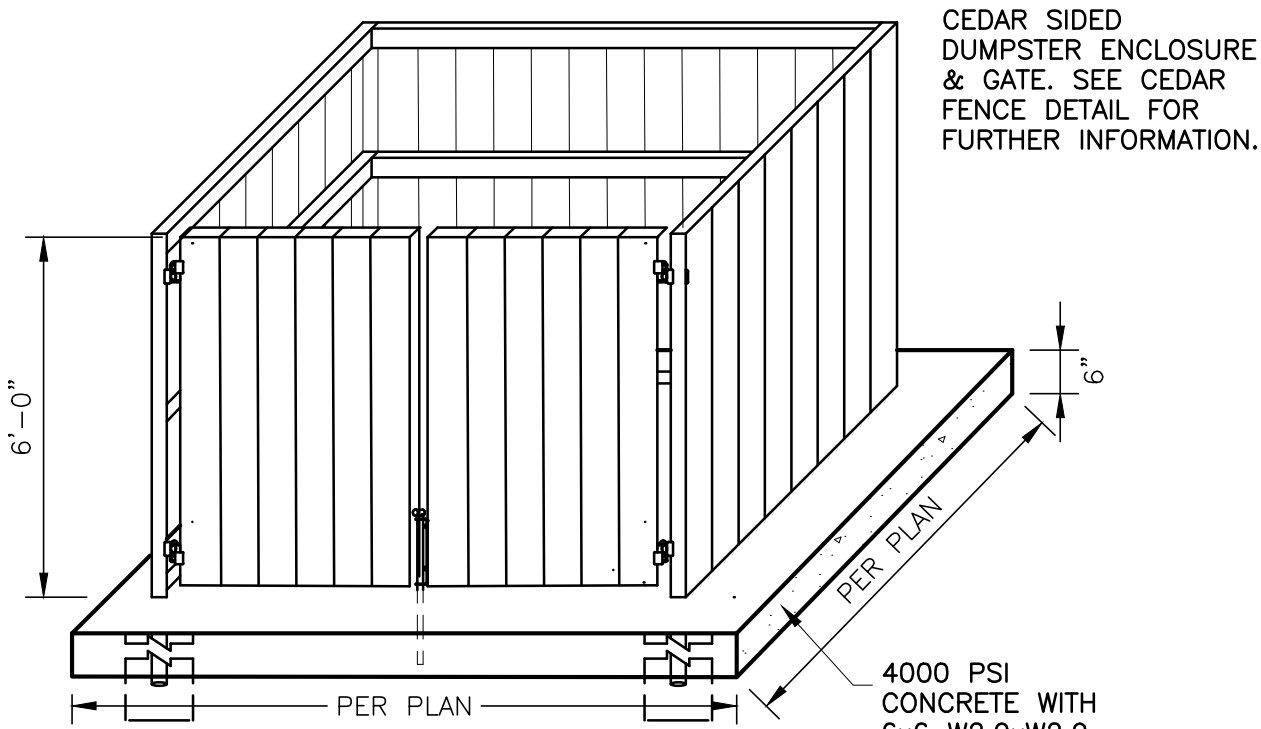


CHIPSEAL PARKING LOT ASPHALTIC TREATMENT DETAIL
N.T.S.

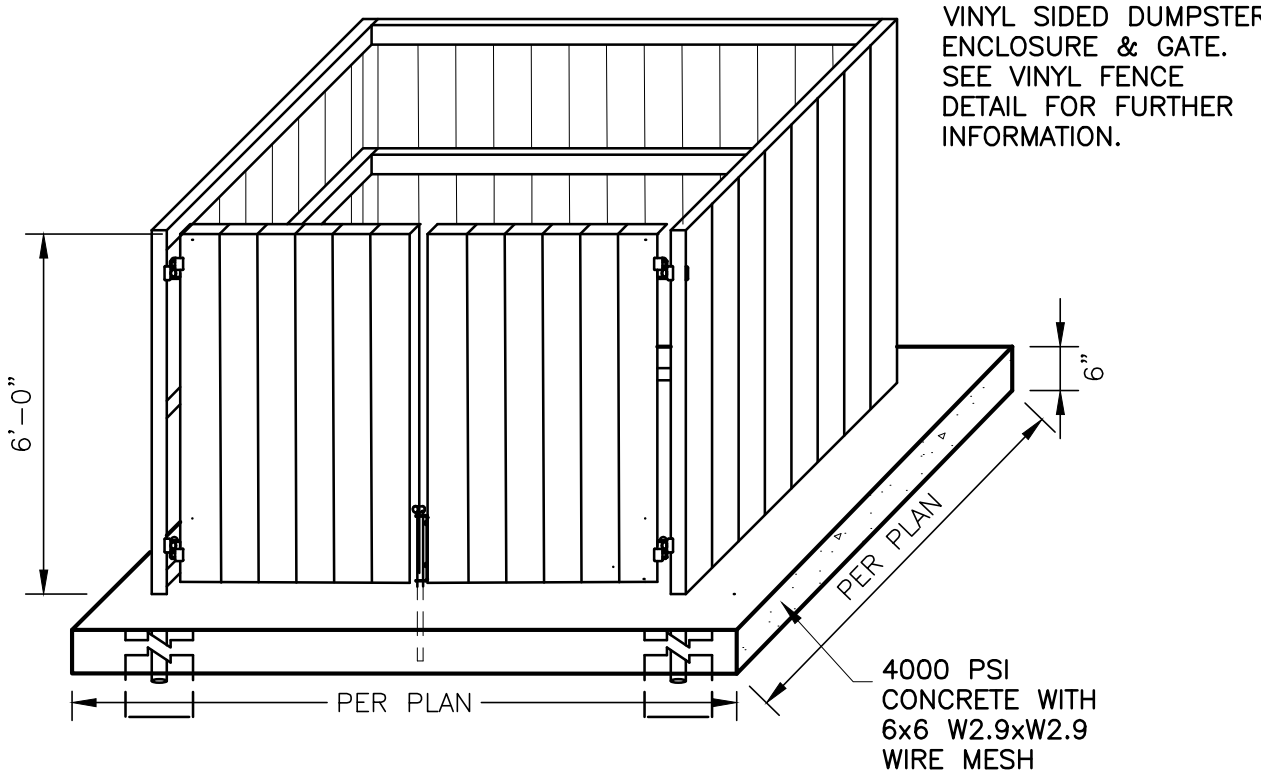


- NOTES:**
- SILT SOCK SHALL BE "SILTSOXX" AS MANUFACTURED BY FILTREXX, INC. OR APPROVED EQUAL.
 - SILT SOCK SHALL FOLLOW ALL REQUIREMENTS OF THE N.Y.S. STANDARDS & SPECIFICATIONS FOR EROSION AND SEDIMENT CONTROL, JULY 2016, PAGES 5.7 - 5.9 INCLUSIVE.

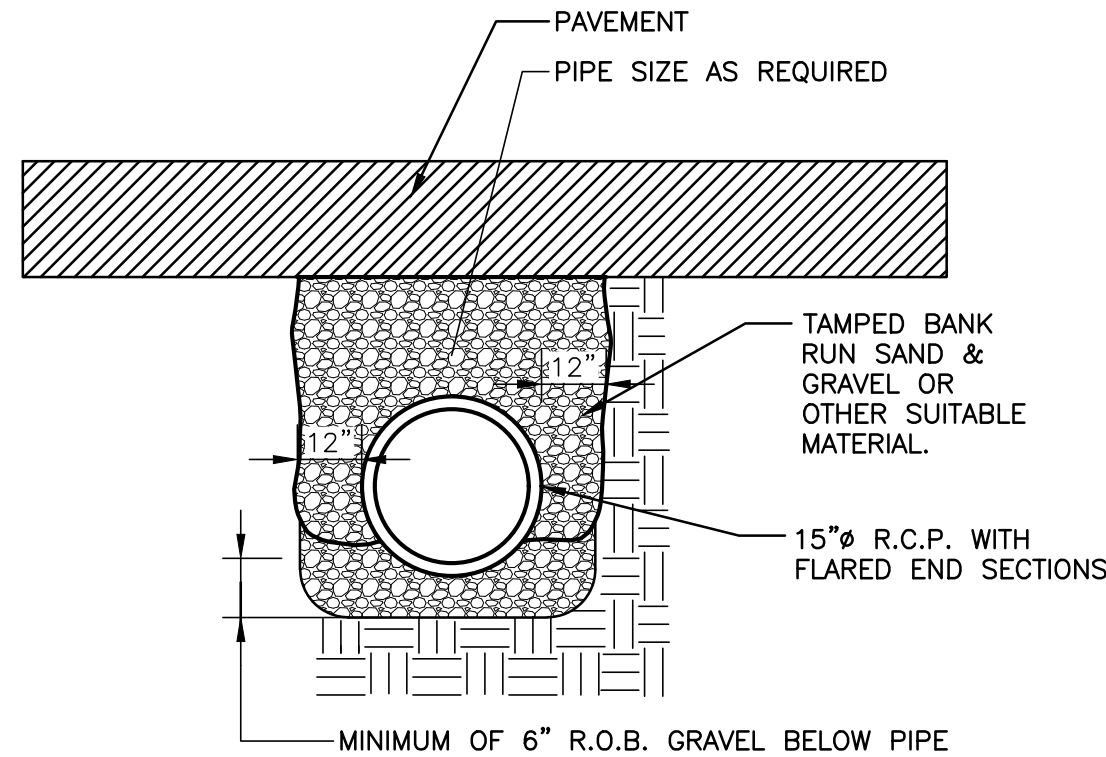
2 SILT SOCK DETAIL
N.T.S.



3 CEDAR FENCE & GATE DUMPSTER ENCLOSURE
N.T.S.

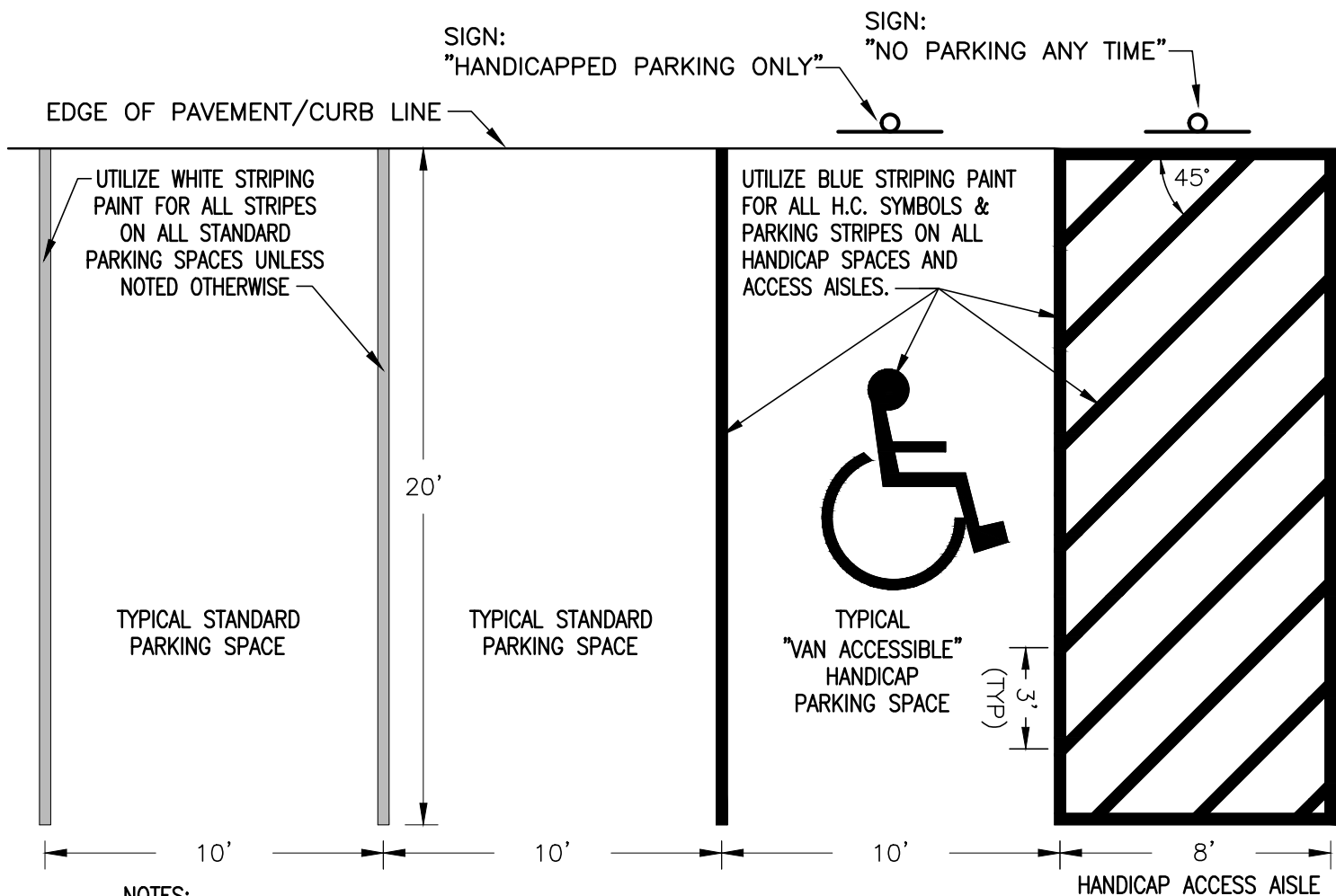


3A ALTERNATE: VINYL FENCE & GATE DUMPSTER ENCLOSURE
N.T.S.



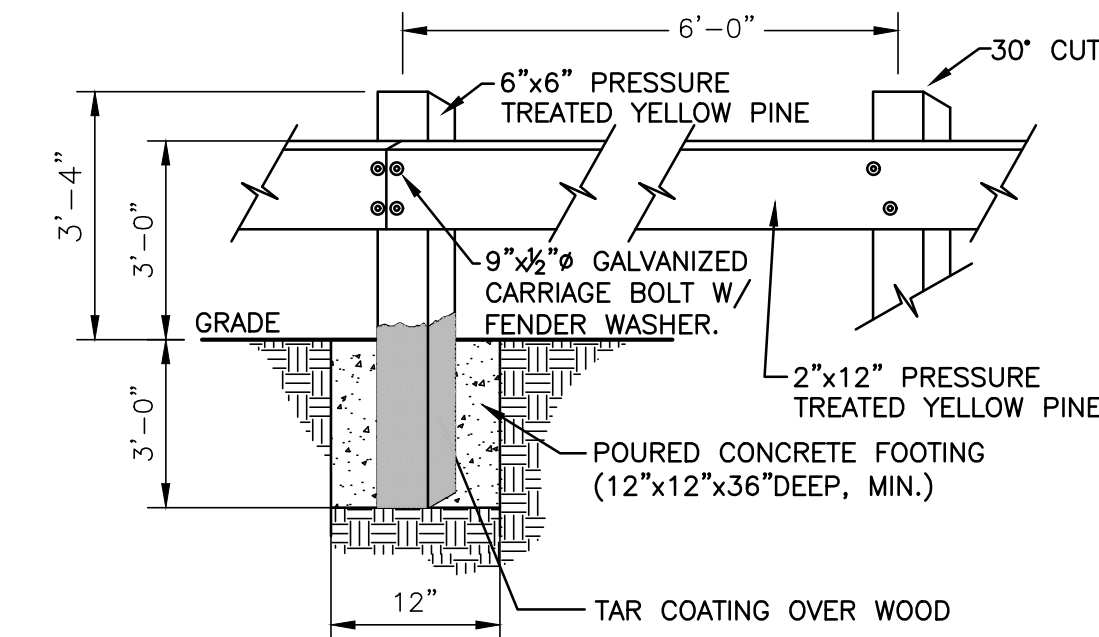
NOTE: PIPE SLOPE SHALL BE 2% MINIMUM ACROSS DRIVEWAY.

4 CULVERT INSTALLATION DETAIL
N.T.S.

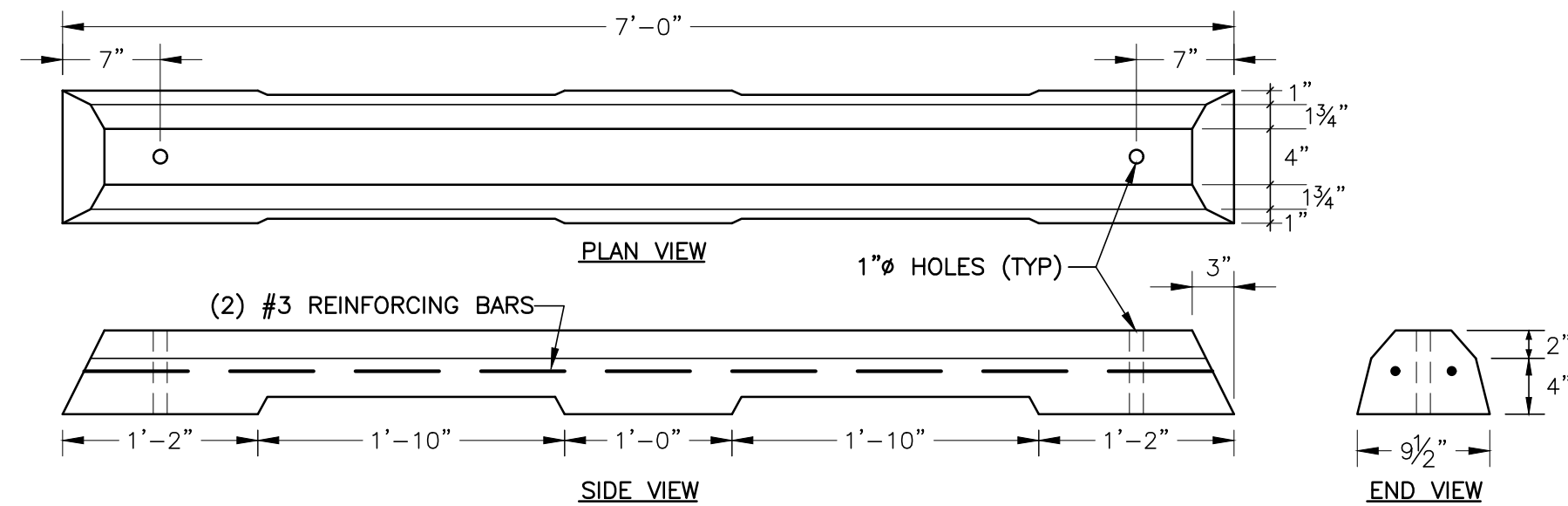


- NOTES:**
- ALL PARKING AREAS TO BE RESTRIPTED AT LEAST ONCE A YEAR.
 - ALL STRIPING TO BE 4" WIDE UNLESS NOTED OTHERWISE.
 - SEE SIGN DETAILS FOR SIGN MOUNTING AND SIGN HEIGHT REQUIREMENTS.
 - AT LEAST 1 (ONE) SPACE OF EVERY 8 (EIGHT) REQUIRED HANDICAP SPACES SHALL BE "VAN ACCESSIBLE", WITH A MINIMUM REQUIREMENT OF 1 (ONE) "VAN ACCESSIBLE" SPACE, IF LESS THAN 8 HANDICAP SPACES ARE REQUIRED.

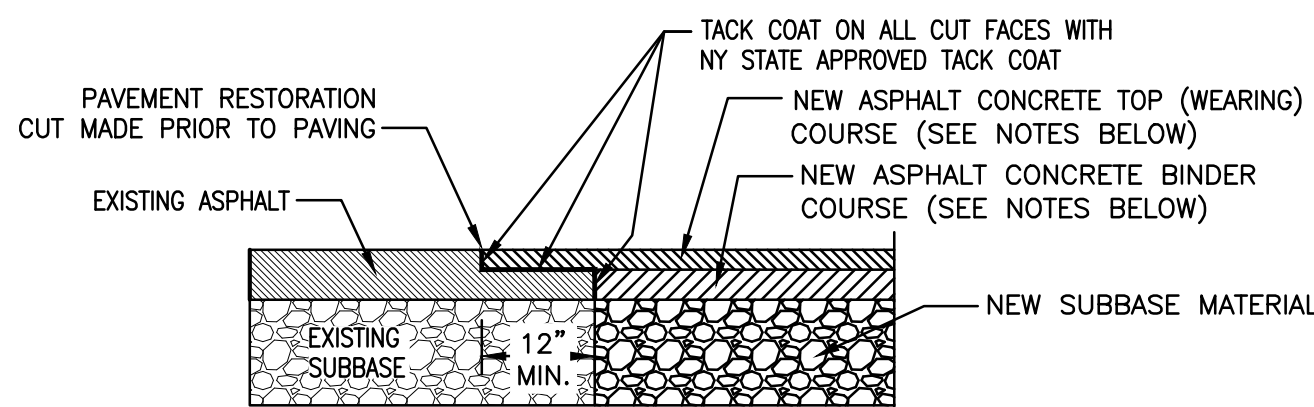
5 VAN ACCESSIBLE HANDICAP PARKING - STRIPING DETAIL
N.T.S.



6 TIMBER GUIDE RAIL DETAIL
N.T.S.

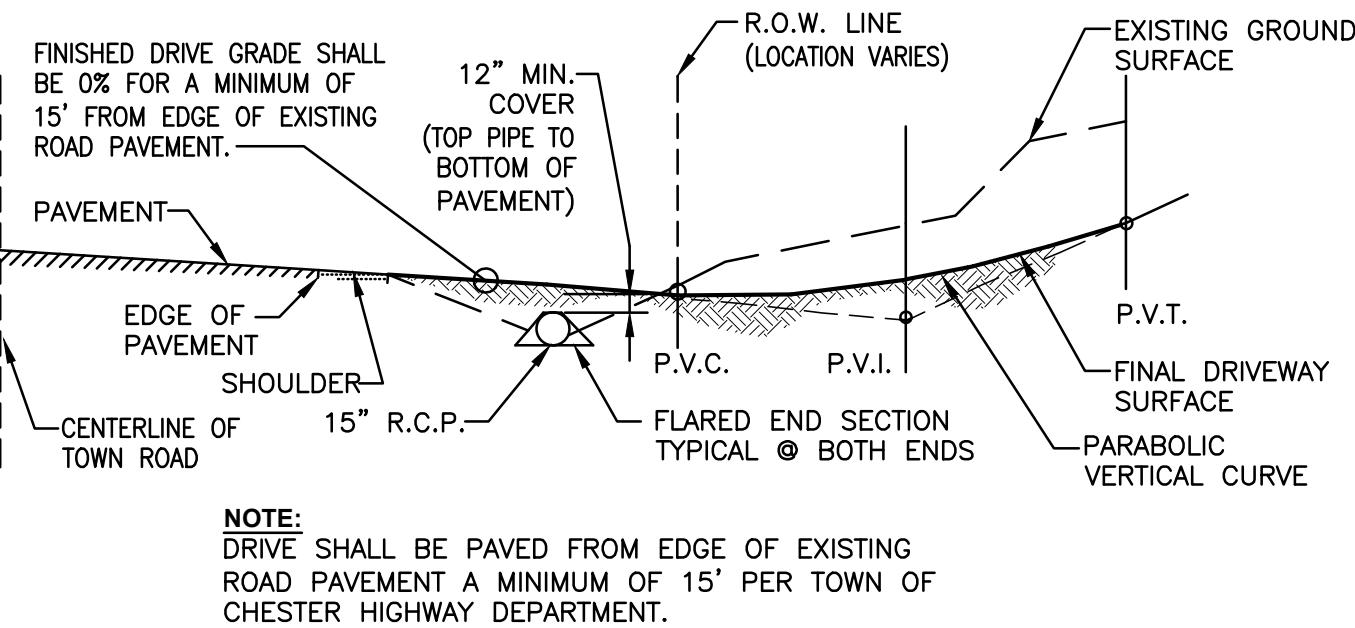


7 CONCRETE BUMPER BLOCK DETAIL
N.T.S.



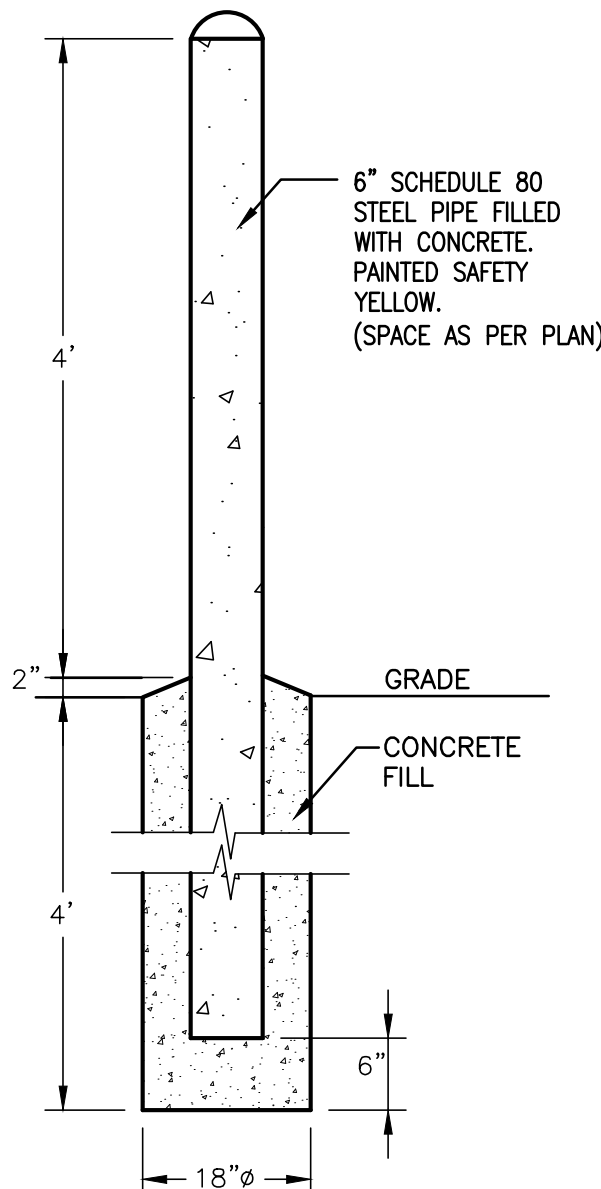
- NOTES:**
- CONSULT PAVEMENT DETAIL SPECIFIC TO TYPE OF PAVEMENT BEING RESTORED FOR THAT AREA FOR REQUIRED MATERIAL SPECIFICATIONS AND DEPTH REQUIRED.
 - IN NO CASE SHALL THE THICKNESS OF NEW PAVEMENT LAYERS BE LESS THE CORESPONDING LAYERS OF THE EXISTING PAVEMENT.

8 PAVEMENT RESTORATION DETAIL
N.T.S.

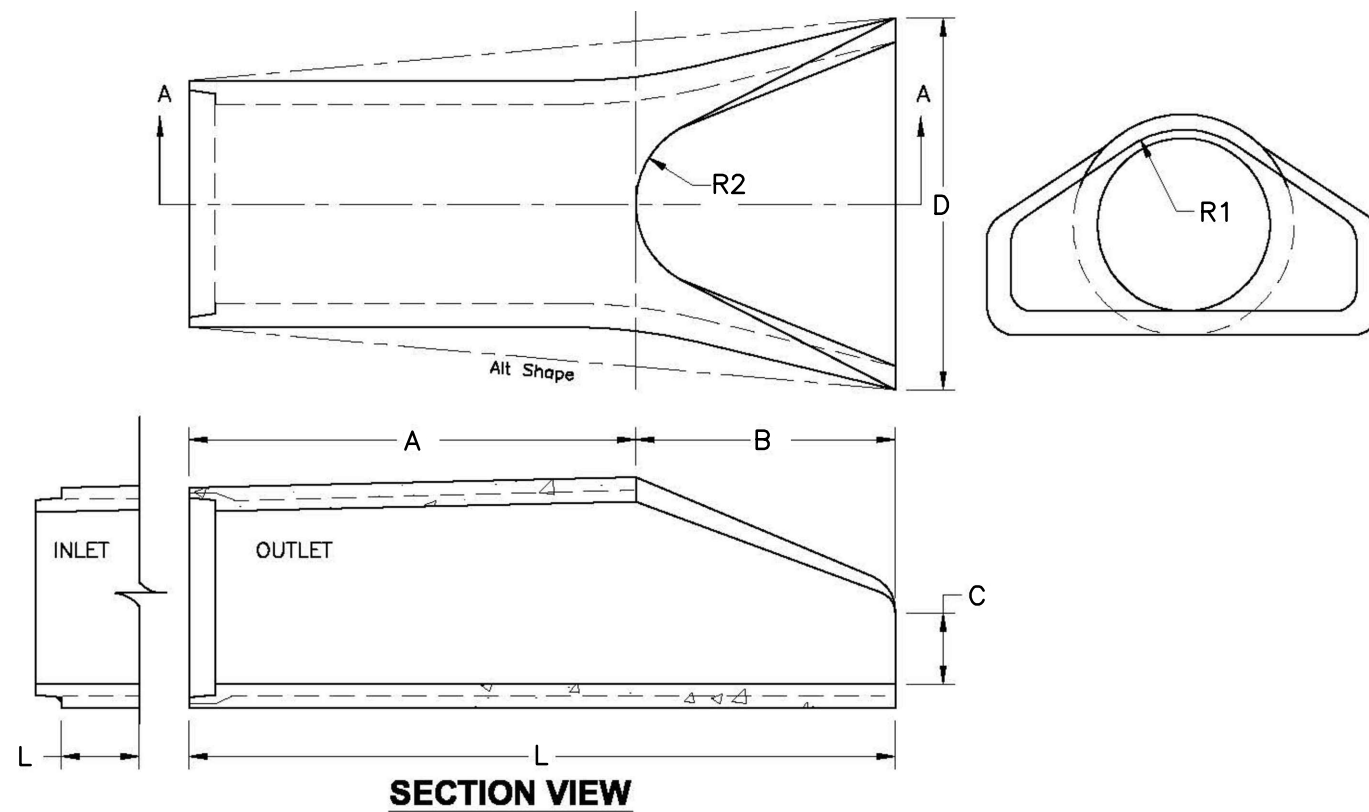


NOTE: DRIVE SHALL BE PAVED FROM EDGE OF EXISTING ROAD PAVEMENT A MINIMUM OF 15' PER TOWN OF CHESTER HIGHWAY DEPARTMENT.

9 DRIVEWAY ENTRANCE PROFILE
N.T.S.



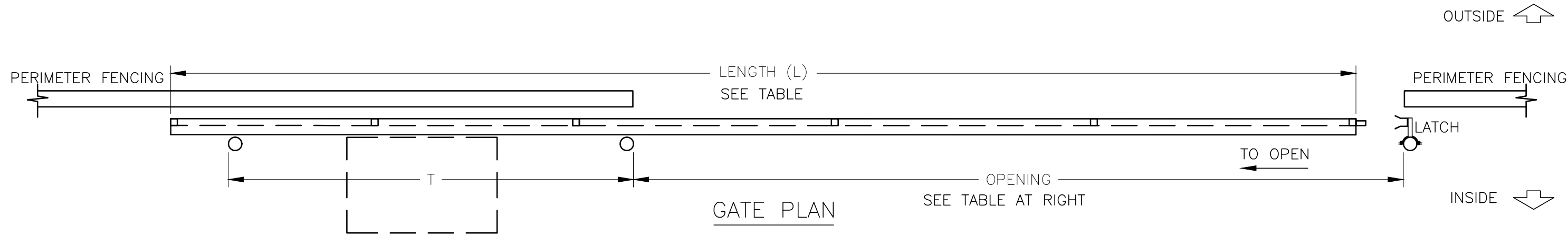
10 BOLLARD POST DETAIL
N.T.S.



DIAMETER	WATER AREA	OVERALL LAYING LENGTH	BARREL LENGTH	FLARE LENGTH						WALL THICKNESS	WEIGHT
inches	sq.ft.	ft-in	ft-in	ft-in	inch	inch	inch	inch	inch	inch	lbs.
15	1.23	6'-1"	3'-10"	2'-3"	6	30	12.1/2	11	2.1/4		740

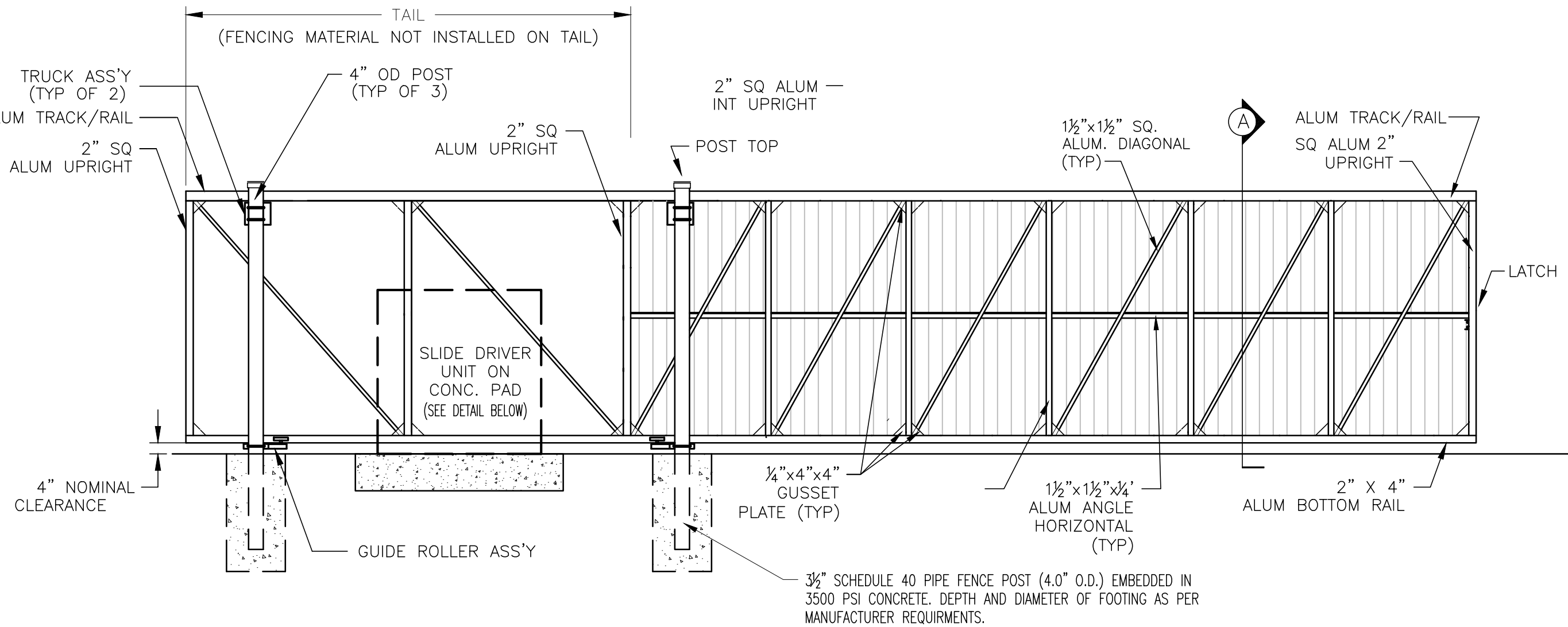
11 RCP FLARED END SECTION DETAIL
N.T.S.

4	09/13/18	REVISED PER TOWN COMMENTS			
3	09/06/18	REVISED PER TOWN COMMENTS			
2	07/31/18	REVISED PER TOWN COMMENTS			
1	06/14/18	REVISED PER TOWN COMMENTS			
REV #	DATE	REMARKS:	ISSUE #	DATE	ISSUED FOR:
<div>1/8" 1/4" 1/2" 0 1" 2"</div> <div>REFERENCE SCALE</div>					
UNAUTHORIZED ALTERATION OR ADDITION TO A PLAN BEARING A LICENSED PROFESSIONAL ENGINEER'S SEAL IS A VIOLATION OF SECTION 7209, SUB-DIVISION 2 OF THE N.Y. STATE EDUCATION LAW.					
<div><div>FELLENZER ENGINEERING LLP</div><div>22 Mulberry St., Suite 2A, Middletown, NY 10940 t 845-343-1481 fx 845-343-4986</div><div>181 Church St., Suite 100, Poughkeepsie, NY 12601 t 845-454-9704 fx 855-320-8735</div></div>					
MARK D. FELLENZER, P.E. NEW YORK STATE PROFESSIONAL ENGINEER NO. 064946-1					
PROJECT TITLE: LEHIGH AVENUE SITE PLAN 191 LEHIGH AVENUE CHESTER, NY					
DRAWING TITLE: DETAILS					
DESIGNED BY: SAR		DRAWN BY: SAR		APPROVED BY PM: ACL	
DATE: 03/21/2018		SCALE: AS SHOWN		FE PROJECT #: 18-055	
				DRAWING #: C-901 PAGE 3 OF 4	



OPENING	LENGTH (L)	TAIL POSTS (T)
1/5 POST FACE TO 1/5 POST FACE	0/S DIM OF GATE LEAF	0/S POST FACE TO 0/S POST FACE
21'-0"	32'	10'-0"

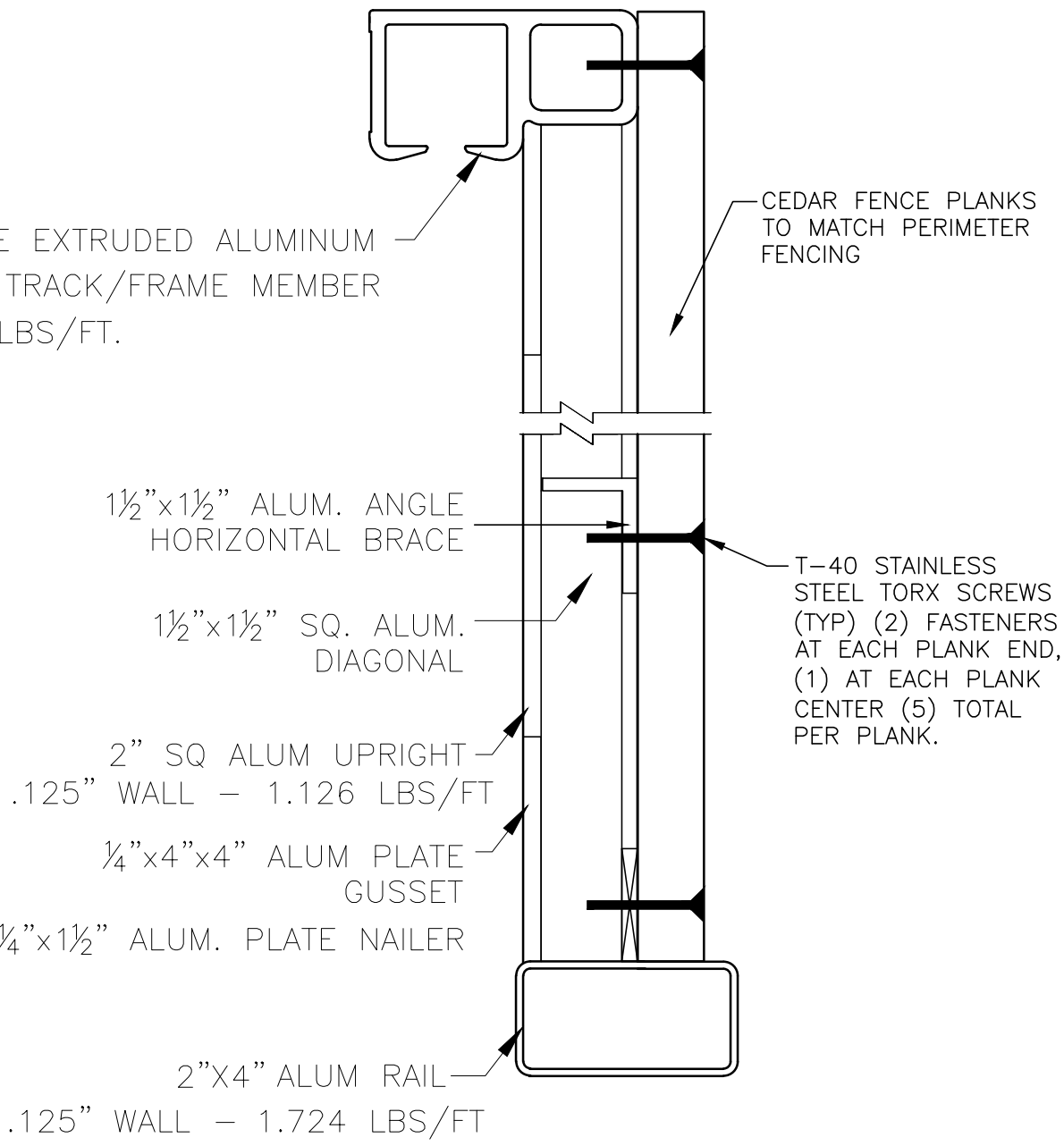
NOTES:
1. GATE LOCATED ON INSIDE PERIMETER OF FENCING.



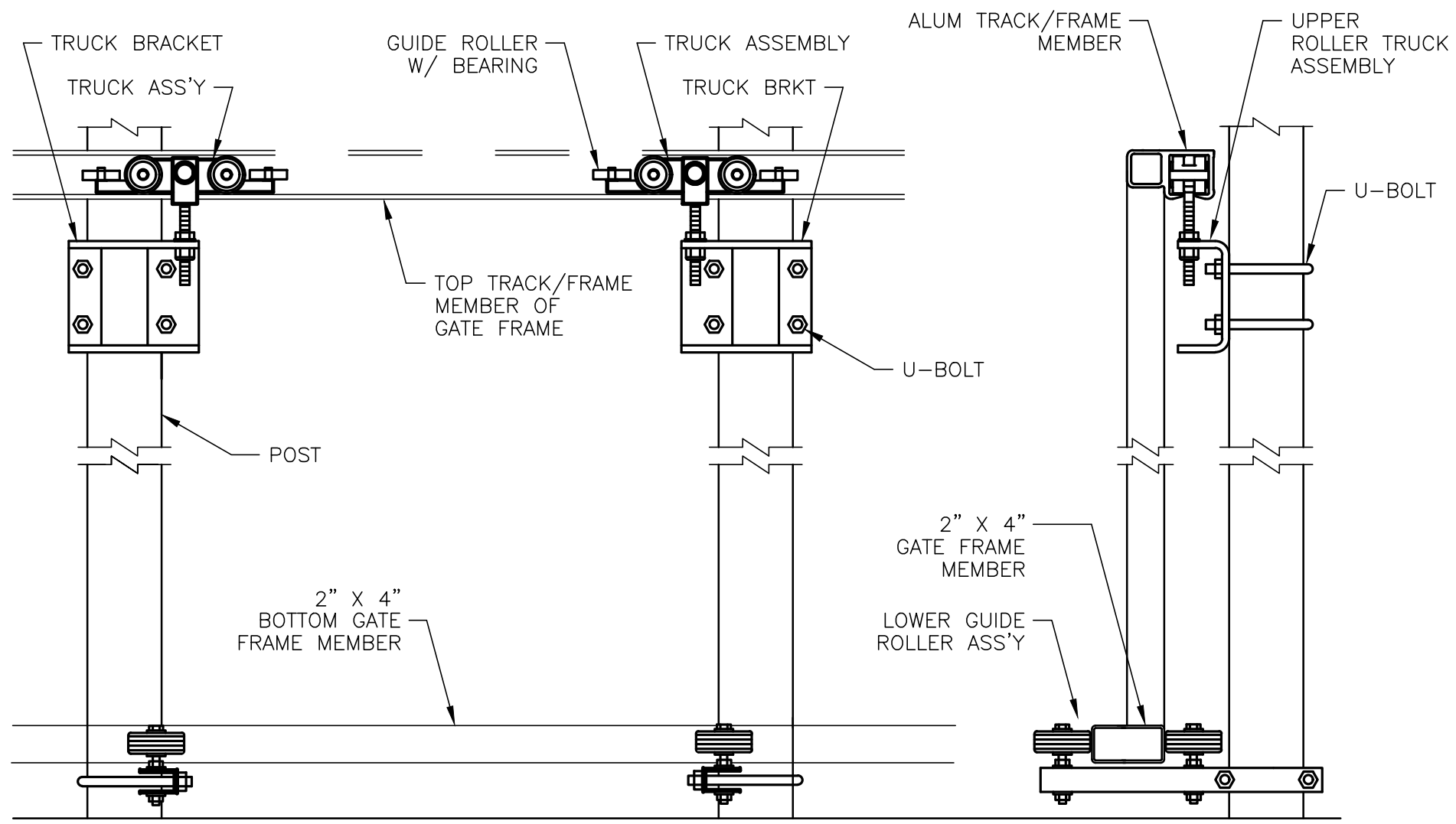
GATE ELEVATION
VIEW FROM INSIDE

NOTES:
1. GATE TO BE MOTOR DRIVEN.

ONE PIECE EXTRUDED ALUMINUM
TOP TRACK/FRAME MEMBER
4.6 LBS/FT.



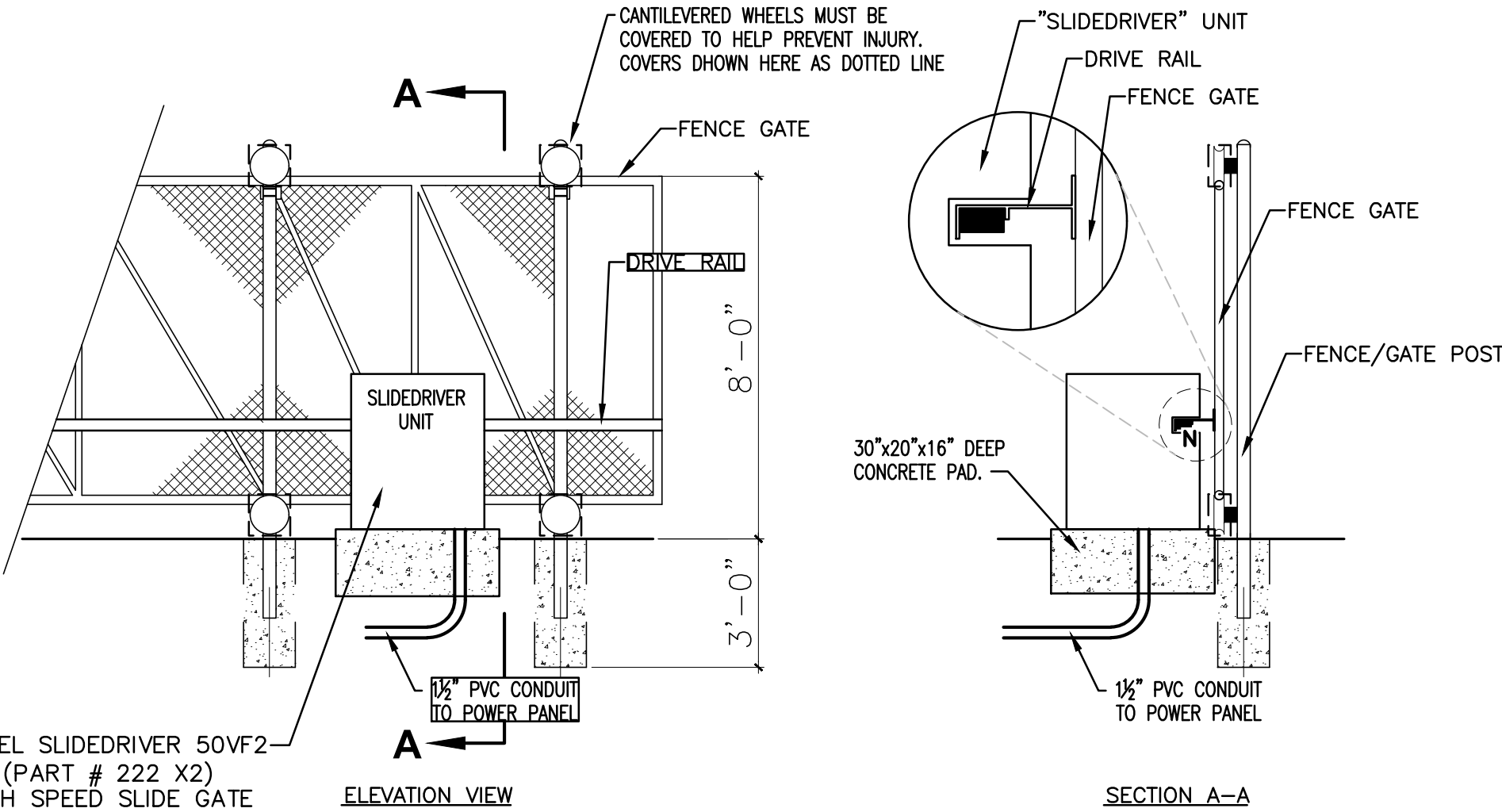
SECTION VIEW A



NOTE: TRUCK BRACKET AND BOTTOM GUIDE ROLLER ASS'Y CAN ALSO BE BOLTED TO A SOLID GROUTED CMU WALL.

ROLLER BRACKET DETAIL

1 20' WIDE SLIDING GATE FOR 6' HIGH CEDAR FENCE DETAIL
N.T.S.



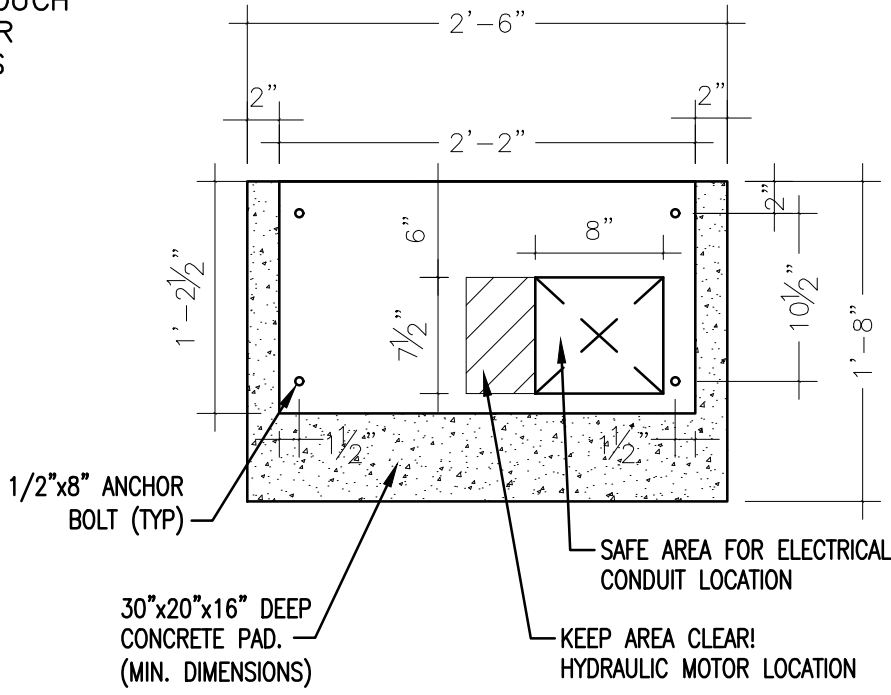
MODEL SLIDEDRIVER 50VF2
(PART # 222 X2)
HIGH SPEED SLIDE GATE
OPERATOR
WITH SMART TOUCH
CONTROLLER
02827 HYS

ELEVATION VIEW

SECTION A-A

NOTES:

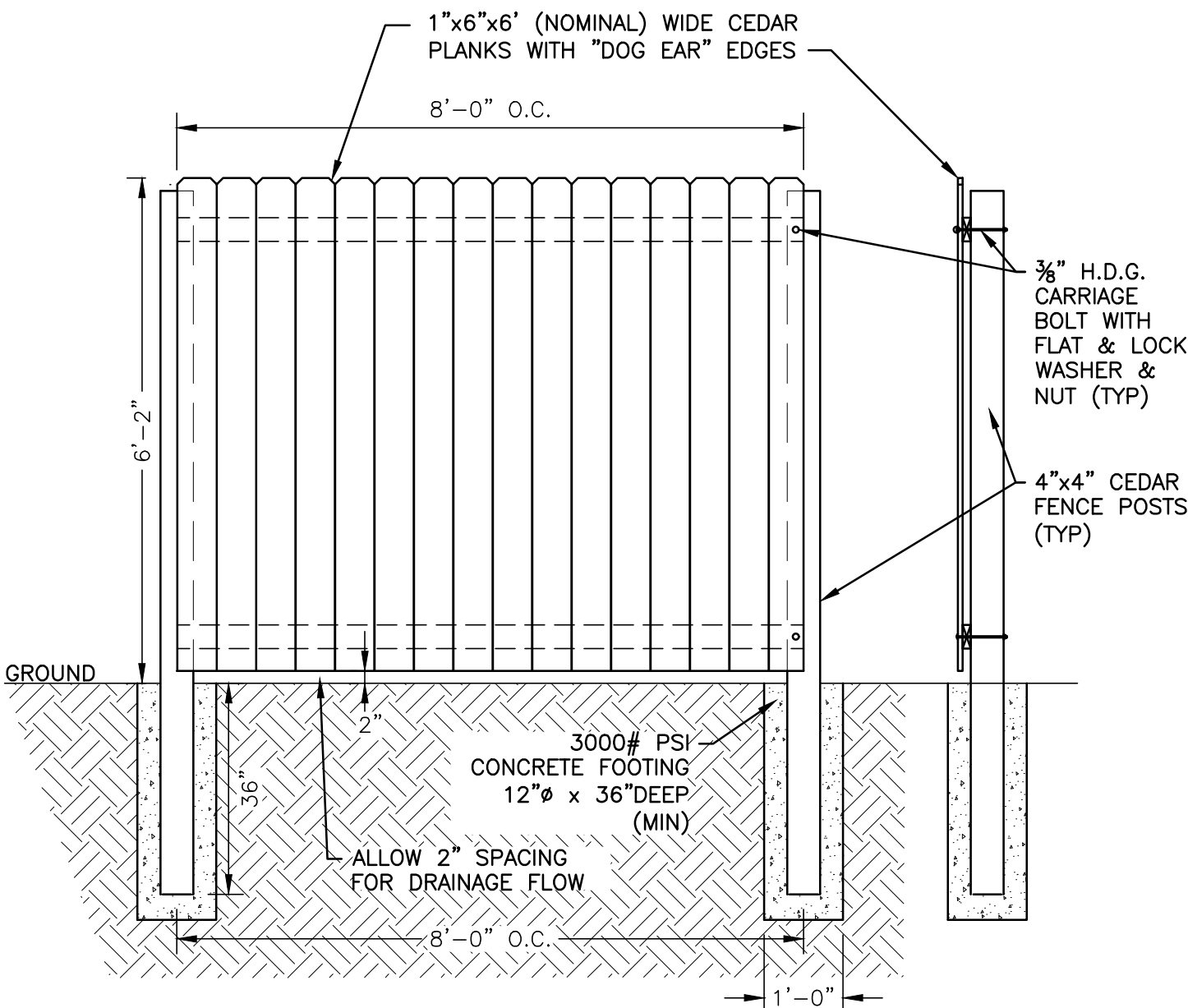
- MINIMUM CONCRETE SLAB DIMENSIONS ARE 30" WIDE, 20" FRONT TO BACK, AND A DEPTH OF 16". CHECK LOCAL FROST CONDITIONS AND SOIL CHARACTERISTICS FOR EXACT REQUIREMENTS.
- FOUR (4) 1/2"x8" ANCHOR BOLTS WITH HEAVY WASHERS REQUIRED TO MOUNT SLIDEDRIVER UNIT TO CONCRETE SLAB. TEMPLATE SHOWN IS FOR BOTH LEFT AND RIGHT HAND AND RIGHT HAND OPENING OPERATORS.
- THESE DIMENSIONS ARE FOR REFERENCE ONLY, ACTUAL DIMENSIONS MAY VARY DEPENDING ON PAD SIZE.
- UNDER NO CIRCUMSTANCES SHALL THE BASE OF THE UNIT BE CUT. DOING SO SHALL VOID ANY AND ALL WARRANTIES.
- RECOMMENDED GATE POST SPACING OF 50% OF GATE OPENING SHOULD PROVIDE EFFICIENT AND SMOOTH OPERATION.
- GUIDE RAIL MUST BE INSTALLED STRAIGHT AND TRUE. SHIMMING MAY BE REQUIRED ON SLIGHTLY BOWED GATES.



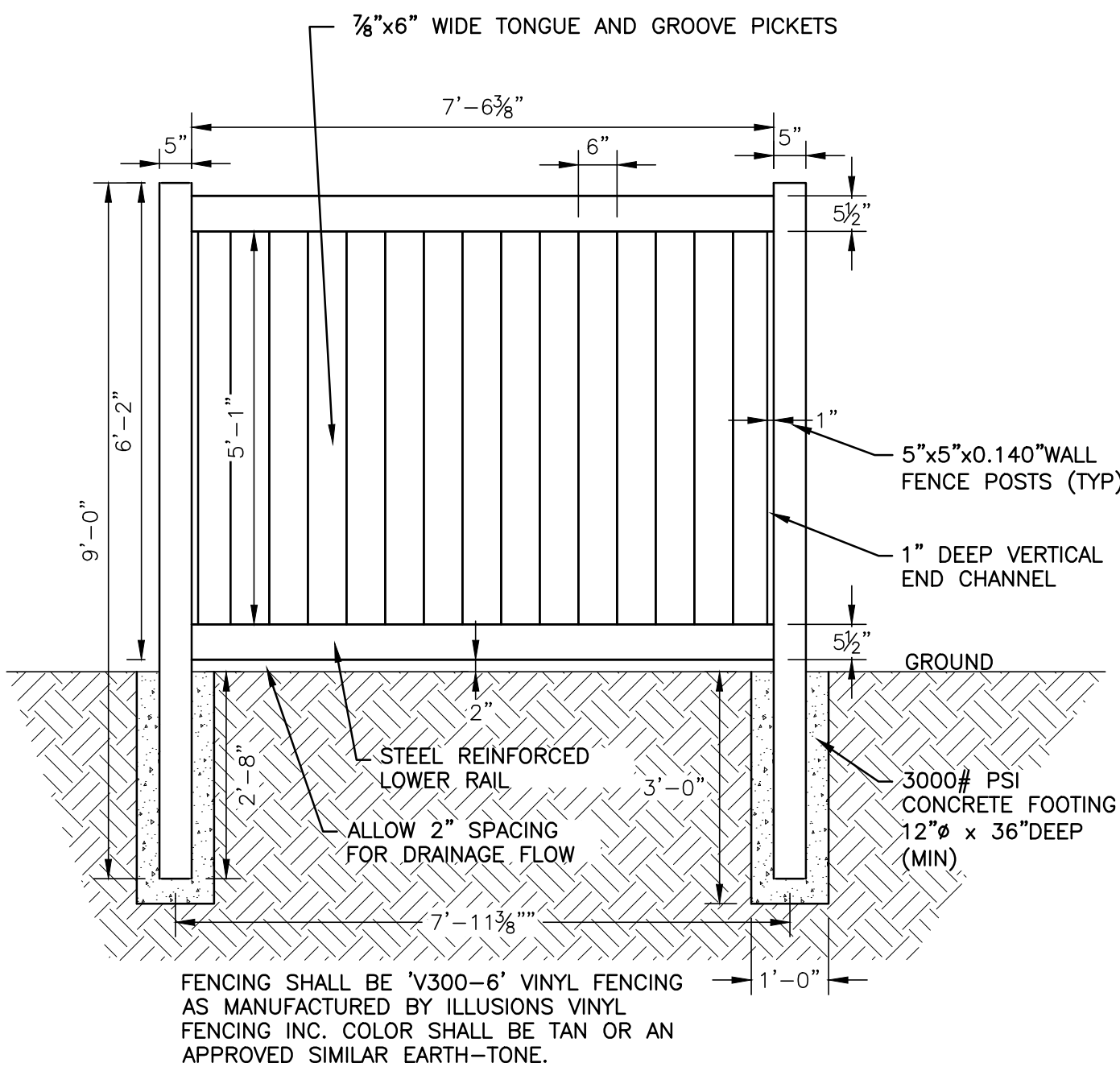
CONCRETE PAD DETAIL

NOTE:
DIMENSIONS & HOLE PATTERN SHOWN ARE APPROXIMATE.
CONTRACTOR SHALL FOLLOW ALL MANUFACTURER'S CURRENT
REQUIREMENTS FOR MODEL INDICATED AT TIME OF CONSTRUCTION.

2 SLIDEDRIVER GATE MECHANISM DETAILS
N.T.S.

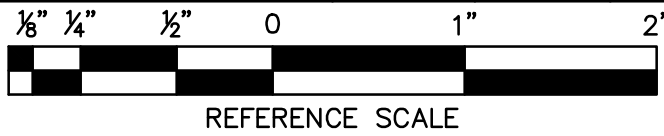


3 6' HIGH CEDAR PRIVACY FENCE
N.T.S.



2A ALTERNATE: 6' HIGH VINYL PRIVACY FENCE
N.T.S.

REV #	DATE	REMARKS:	ISSUE #	DATE	ISSUED FOR:
4	09/13/18	REVISED PER TOWN COMMENTS			
3	09/06/18	REVISED PER TOWN COMMENTS			
2	07/31/18	REVISED PER TOWN COMMENTS			
1	06/14/18	REVISED PER TOWN COMMENTS			



UNAUTHORIZED ALTERATION OR ADDITION TO A PLAN BEARING A
LICENSED PROFESSIONAL ENGINEER'S SEAL IS A VIOLATION OF
SECTION 7209, SUB-DIVISION 2 OF THE N.Y. STATE EDUCATION LAW.

FELLENZER
ENGINEERING LLP

22 Mulberry St., Suite 2A,
Middletown, NY 10940
t 845-343-1481 fx 845-343-4986

181 Church St., Suite 100,
Poughkeepsie, NY 12601
t 845-454-9704 fx 855-320-8735



PROJECT TITLE:				
LEHIGH AVENUE SITE PLAN 191 LEHIGH AVENUE CHESTER, NY				
DRAWING TITLE:				
DETAILS				
DESIGNED BY: SAR	DRAWN BY: SAR	APPROVED BY PM: ACL	APPROVED BY PIC: MDF	DRAWING #: C-902
DATE: 03/21/2018	SCALE: AS SHOWN	FE PROJECT #: 18-055	PAGE 4 OF 4	