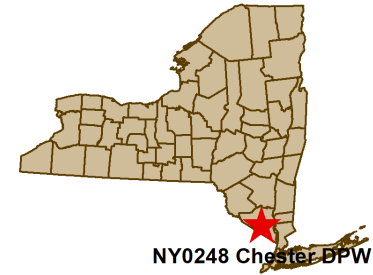


Viewshed Mapping Package

Proposed Wireless Telecommunications Facility:

NY0248 Chester DPW
Co Hwy 45
Chester, NY 10950



- Proposed new 150 ft AGL antenna structure
- Viewshed map completed 8/31/22
- Data extended to 3.5 mile radius to include Goosepond Mountain State Park

Package prepared by:

Virtual Site Simulations, LLC
24 Salt Pond Road
Suite C3
South Kingstown, Rhode Island 02879

www.VirtualSiteSimulations.com
www.ThinkVSSFirst.com

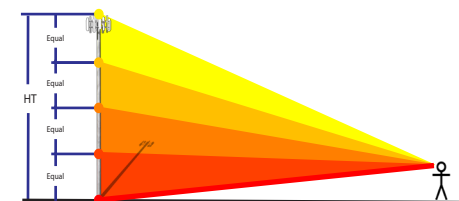
Viewshed analysis maps and representations contained herein depict where proposed facility may potentially be visible based on the best data available and site conditions at the time data was collected. This study does not claim to depict all locations from where the facility may be potentially visible.



Proposed Facility:
 NY0248 Chester DPW
 Co Hwy 45
 Chester, NY 10950

Leaf On Viewshed - Imagery

IVSview® Color Legend



★ Facility Location

○ 3.5 Mile Radius

Tower Visibility

Color	Location	% Vis	Acres
Yellow	Top 25%	0.06%	14.3
Orange	Top 50%	0.04%	9.9
Red	Top 75%	0.04%	9.6
Dark Red	Top 100%	0.07%	17.7
Red	Base	0.00%	0.7
TOTAL		0.21%	52.2 Acres

Statistics:

PROJ_DESC=Geographic (Lat/Long) / WGS84 / arc degrees
 PROJ_DATUM=WGS84 PROJ_UNITS=arc degrees
 PIXEL_WIDTH=0.0000013 arc degrees (+/- .6 ft)
 PIXEL_HEIGHT=0.0000014 arc degrees (+/- .6 ft)
 RADIUS (FT)= 3.5 Miles
 TRANSMITTER_HEIGHT (Ft-AGL)= 150
 RECEIVER_HEIGHT (Ft-AGL)= 5 Ft
 PERCENT_VISIBLE (%)= 0.21%

Notes:

- map compiled by VSS, LLC on : 8/31/22
- Tower location(lat/long NAD 83): 41.307248 -74.23797
- Data Sources noted on documentation page attached



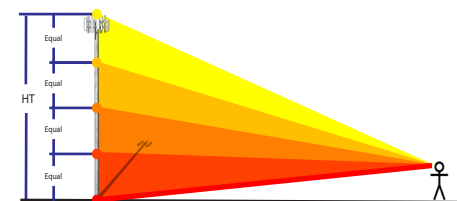
VSS-IVS- Interactive Viewshed Analysis output maps contained herein depict where proposed facility may potentially be visible based on the best and newest data publicly available at the time the data was collected. VSS does not claim to depict all locations from where the facility may potentially be visible and calculated output should be confirmed via site testing as needed.



Proposed Facility:
 NY0248 Chester DPW
 Co Hwy 45
 Chester, NY 10950

Leaf On Viewshed - Topo

IVSview® Color Legend



★ Facility Location

○ 3.5 Mile Radius

Tower Visibility

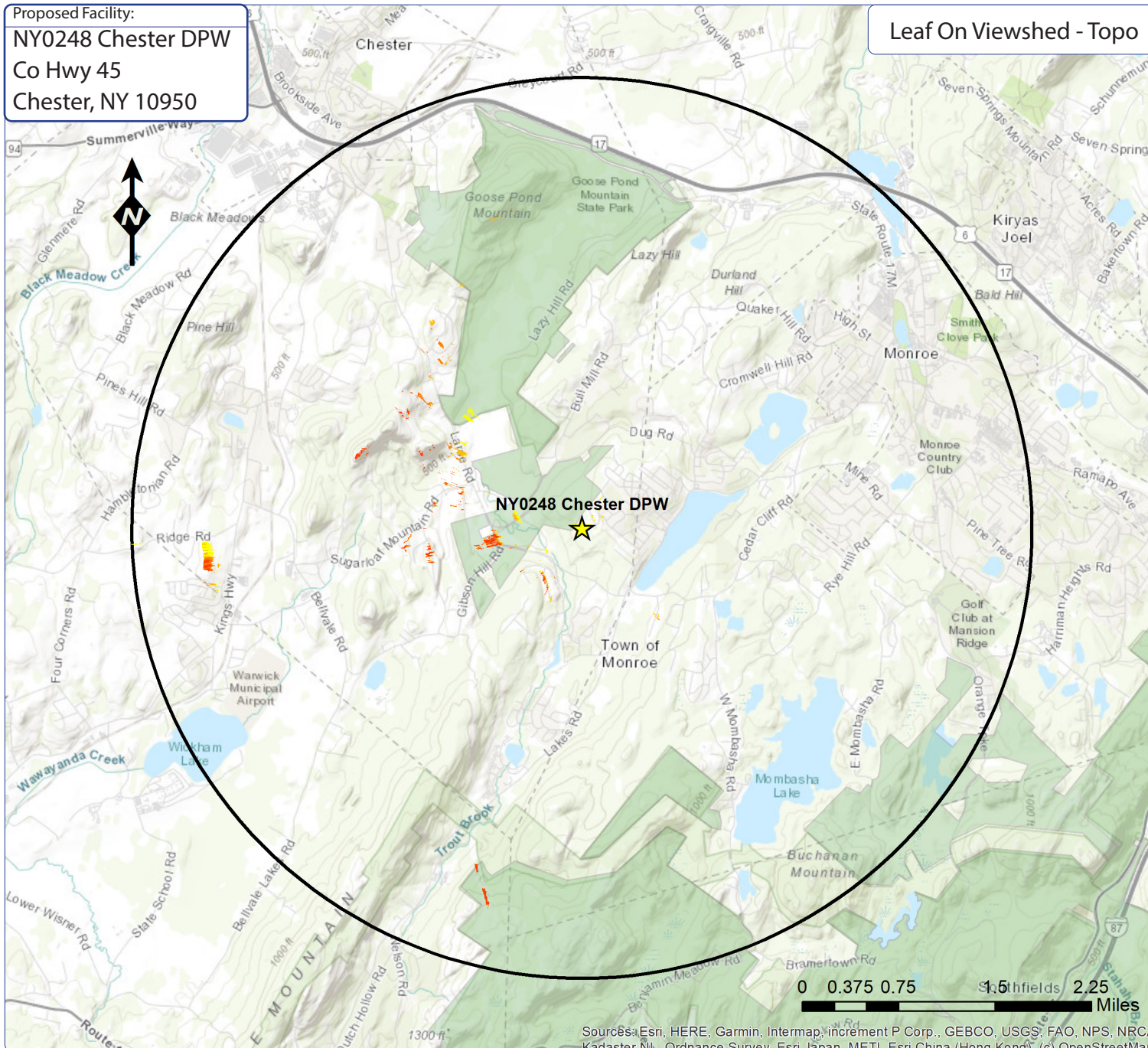
Color	Location	% Vis	Acres
Yellow	Top 25%	0.06%	14.3
Orange	Top 50%	0.04%	9.9
Red	Top 75%	0.04%	9.6
Dark Red	Top 100%	0.07%	17.7
Red	Base	0.00%	0.7
TOTAL		0.21%	52.2 Acres

Statistics:

PROJ_DESC=Geographic (Lat/Long) / WGS84 / arc degrees
 PROJ_DATUM=WGS84 PROJ_UNITS=arc degrees
 PIXEL_WIDTH=0.0000013 arc degrees (+/- .6 ft)
 PIXEL_HEIGHT=0.0000014 arc degrees (+/- .6 ft)
 RADIUS (FT)= 3.5 Miles
 TRANSMITTER_HEIGHT (Ft-AGL)= 150
 RECEIVER_HEIGHT (Ft-AGL)= 5 Ft
 PERCENT_VISIBLE (%)= 0.21%

Notes:

- map compiled by VSS, LLC on : 8/31/22
- Tower location(lat/long NAD 83): 41.307248 -74.23797
- Data Sources noted on documentation page attached



Sources: Esri, HERE, Garmin, Intermap, increment P Corp., GEBCO, USGS, FAO, NPS, NRCAN, Kadaster, NL, Ordnance Survey, Esri, Japan, METI, Esri, China (Hong Kong), (c) OpenStreetMap

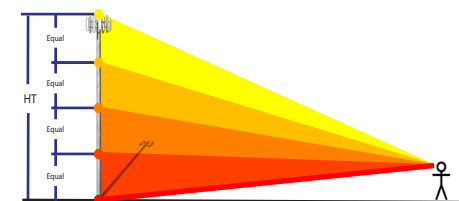
VSS-IVS- Interactive Viewshed Analysis output maps contained herein depict where proposed facility may potentially be visible based on the best and newest data publicly available at the time the data was collected. VSS does not claim to depict all locations from where the facility may potentially be visible and calculated output should be confirmed via site testing as needed.



Proposed Facility:
 NY0248 Chester DPW
 Co Hwy 45
 Chester, NY 10950

Leaf Off Viewshed - Imagery

IVSview® Color Legend



★ Facility Location

○ 3.5 Mile Radius

Tower Visibility

Color	Location	% Vis	Acres
Yellow	Top 25%	0.10%	25.6
Orange	Top 50%	0.17%	40.9
Red	Top 75%	0.09%	23.2
Dark Red	Top 100%	0.17%	42.4
Red	Base	0.01%	2.2
TOTAL		0.55%	134.2 Acres

Statistics:

PROJ_DESC=Geographic (Lat/Long) / WGS84 / arc degrees
 PROJ_DATUM=WGS84 PROJ_UNITS=arc degrees
 PIXEL WIDTH=0.0000013 arc degrees (+/- .6 ft)
 PIXEL HEIGHT=0.0000014 arc degrees (+/- .6 ft)
 RADIUS (FT)= 3.5 Miles
 TRANSMITTER_HEIGHT (Ft-AGL)= 150
 RECEIVER_HEIGHT (Ft-AGL)= 5 Ft
 PERCENT_VISIBLE (%)= 0.55%

Notes:

- map compiled by VSS, LLC on : 8/31/22
- Tower location(lat/long NAD 83): 41.307248 -74.23797
- Data Sources noted on documentation page attached



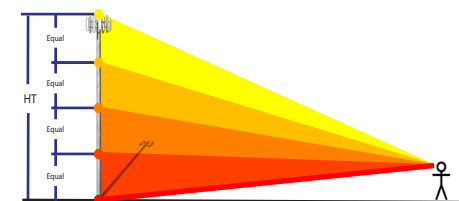
VSS-IVS- Interactive Viewshed Analysis output maps contained herein depict where proposed facility may potentially be visible based on the best and newest data publicly available at the time the data was collected. VSS does not claim to depict all locations from where the facility may potentially be visible and calculated output should be confirmed via site testing as needed.



Proposed Facility:
 NY0248 Chester DPW
 Co Hwy 45
 Chester, NY 10950

Leaf Off Viewshed - Topo

IVSview® Color Legend



★ Facility Location

○ 3.5 Mile Radius

Tower Visibility

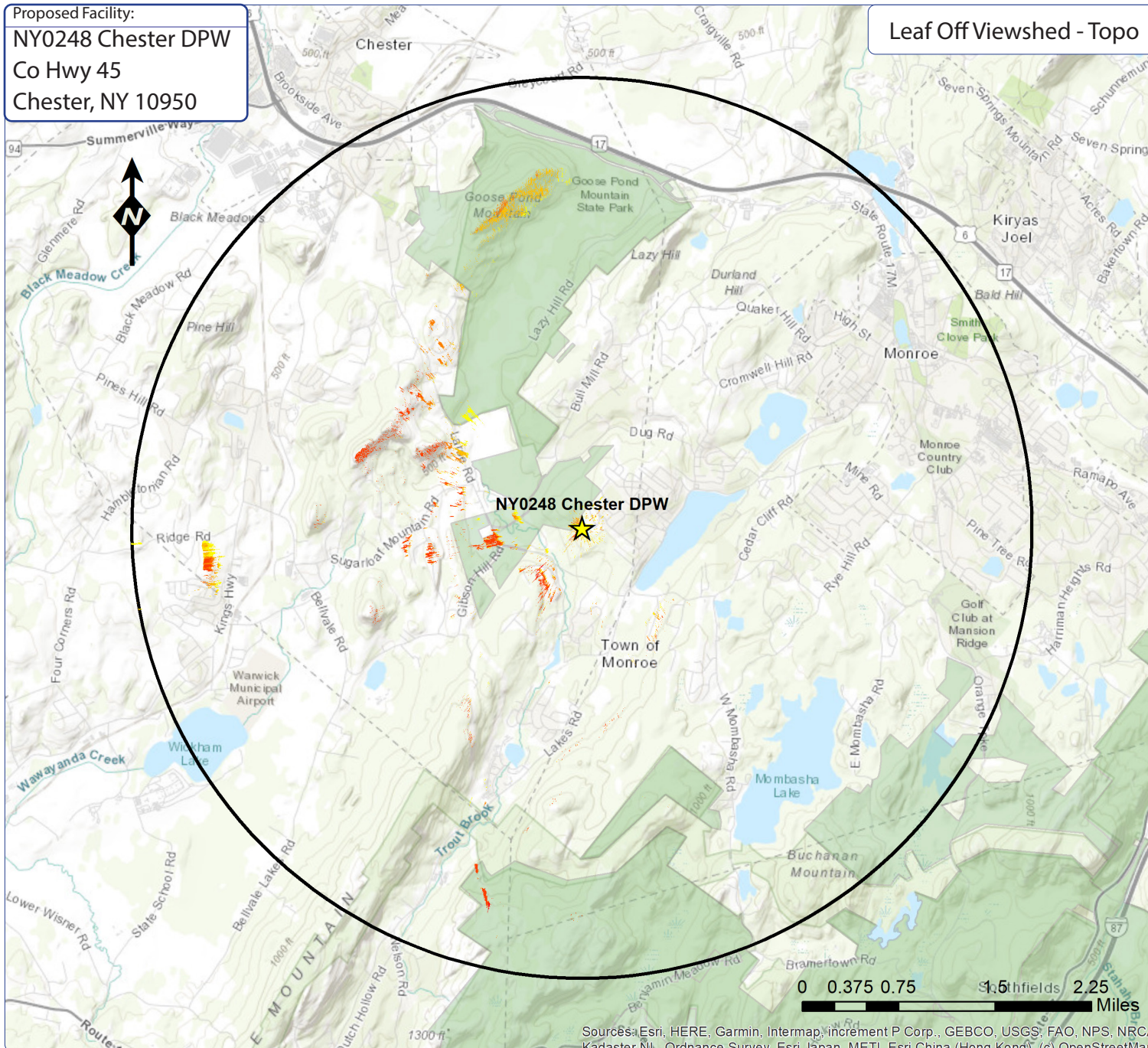
Color	Location	% Vis	Acres
Yellow	Top 25%	0.10%	25.6
Orange	Top 50%	0.17%	40.9
Red	Top 75%	0.09%	23.2
Dark Red	Top 100%	0.17%	42.4
Red	Base	0.01%	2.2
TOTAL		0.55%	134.2 Acres

Statistics:

PROJ_DESC=Geographic (Lat/Long) / WGS84 / arc degrees
 PROJ_DATUM=WGS84 PROJ_UNITS=arc degrees
 PIXEL_WIDTH=0.0000013 arc degrees (+/- .6 ft)
 PIXEL_HEIGHT=0.0000014 arc degrees (+/- .6 ft)
 RADIUS (FT)= 3.5 Miles
 TRANSMITTER_HEIGHT (Ft-AGL)= 150
 RECEIVER_HEIGHT (Ft-AGL)= 5 Ft
 PERCENT_VISIBLE (%)= 0.55%

Notes:

- map compiled by VSS, LLC on : 8/31/22
- Tower location(lat/long NAD 83): 41.307248 -74.23797
- Data Sources noted on documentation page attached



VSS-IVS- Interactive Viewshed Analysis output maps contained herein depict where proposed facility may potentially be visible based on the best and newest data publicly available at the time the data was collected. VSS does not claim to depict all locations from where the facility may potentially be visible and calculated output should be confirmed via site testing as needed.

