

Goosepond Park Photo Analysis

Based on a request by the Palisades Interstate Park, the following pictures were taken:

At the Lazy Hill Road parking area, off of Laroe Road

Walking along Lazy Hill Road until it turns sharp to the left

At the Highlands Trail high point where it crosses the double station power line

The Highlands Trail at the South end of the ridge before it drops down towards Bull Mill Road

The Goosepond Parking area on Bull Mill Road

Additional Notes on Goosepond Park viewsheds:

The area **south** of Lazy Hill Road before the sharp left bend contains approximately 75 acres of private property that has the potential to be developed and if so, the current views may be obstructed in the future.

Both the Lazy Hill Road and the Bull Mill Road parking areas **are not maintained by the PIP** in the winter and parking during snow cover makes them unavailable for hiking.

There is a **second power line** that the Highlands Trail crosses as it approaches Bull Mill Road

The Neptune Drive towers **are visible** from south of the double station power lines.



View from the Lazy Hill Road parking lot off of Laroe Road
Large microwave tower visible at Neptune Drive



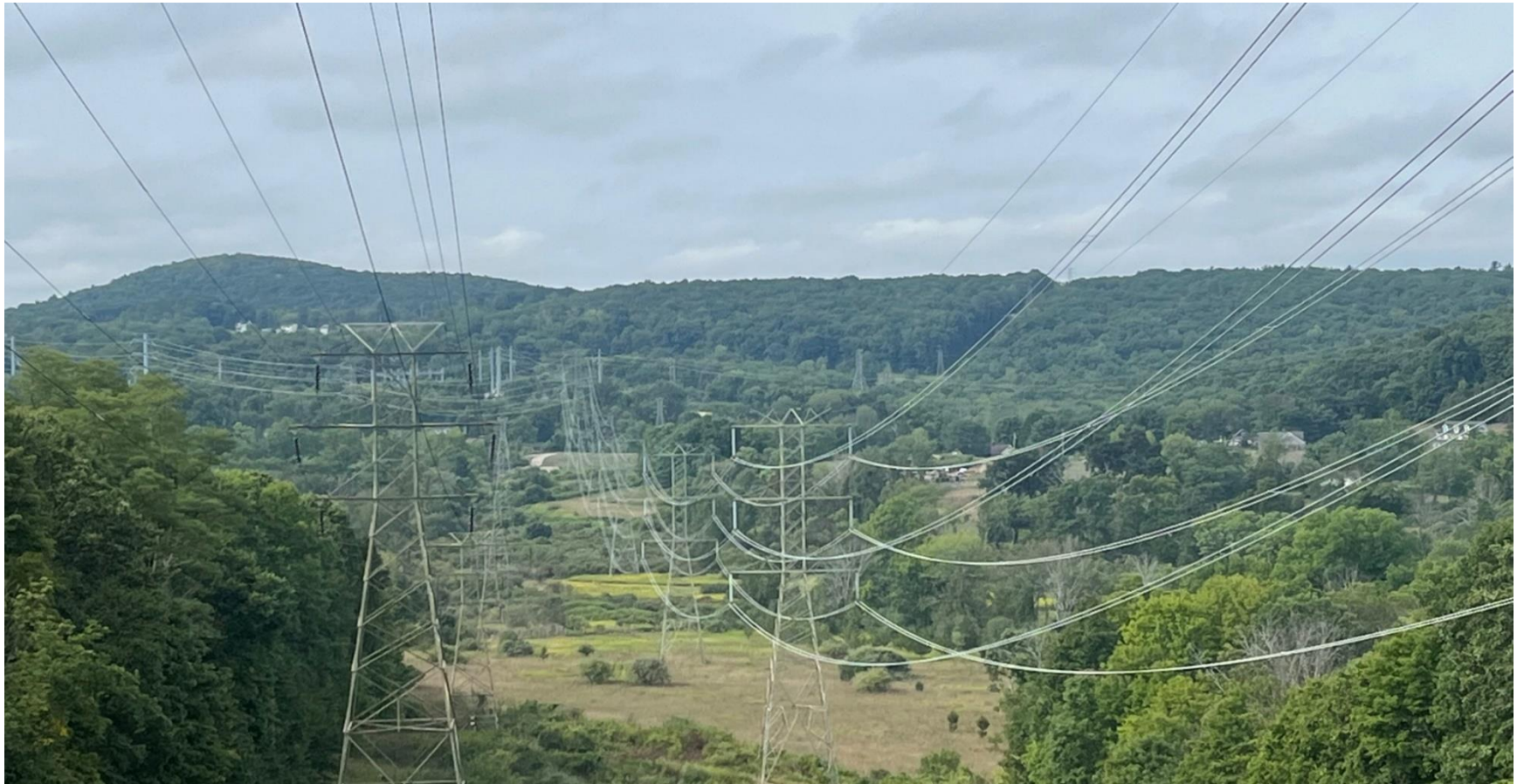
**View from Lazy Hill Road approximately 200 feet down from parking lot.
Electrical power tower and microwave tower visible.**



**View from Lazy Hill Road approximately 300 feet down from parking lot.
Neptune Drive cell tower visible.**



Highlands Trail at high point crossing the power lines looking south towards the direction of the proposed cell tower.



Picture at the high point looking below the Highlands Trail towards Laroe Road



View from above the Highlands Trail taken at the high point



The Highlands Trail at the South end of the ridge before it drops down towards Bull Mill Road



The Goosepond parking area on Bull Mill Road.