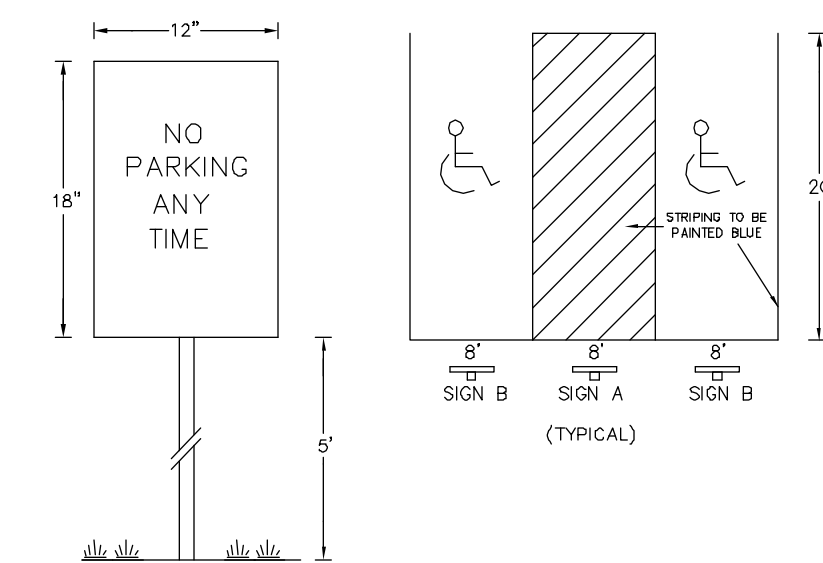
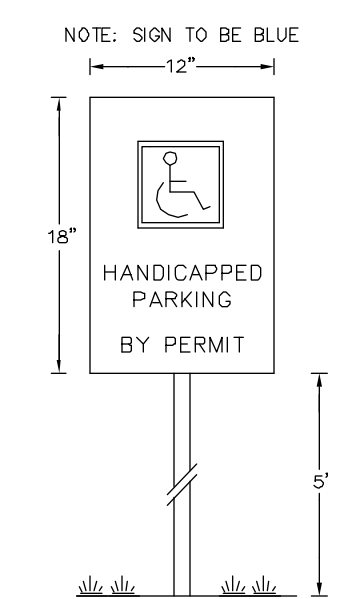


### SIGN A DETAIL

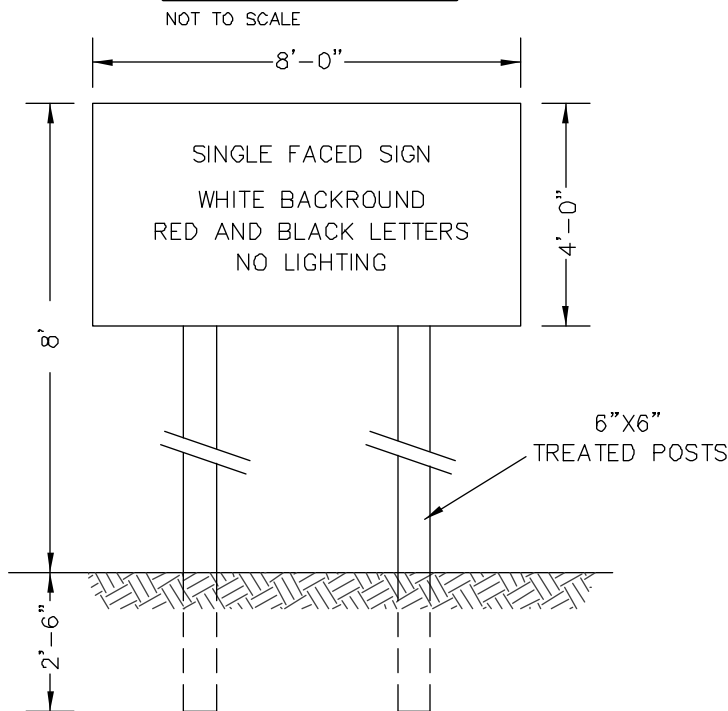


### HANDICAPPED PARKING DETAIL

### SIGN B DETAIL



### SIGN DETAIL



### SIGN LEGEND

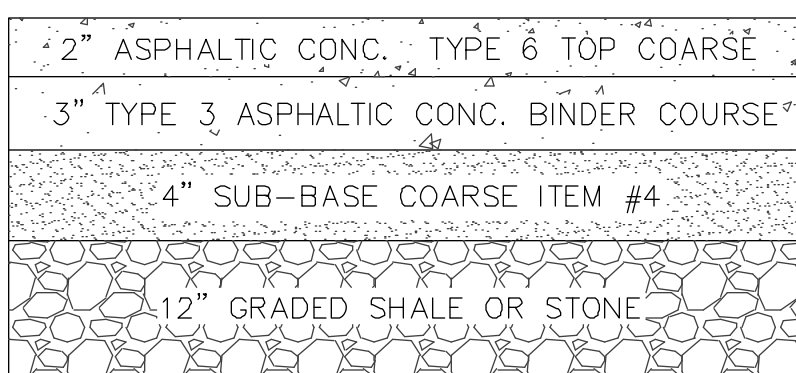
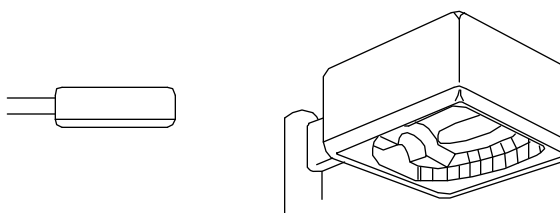
PROP. STOP SIGN ♀  
PROP. HANDICAP SIGN ▼

### LIGHT POLE DETAIL

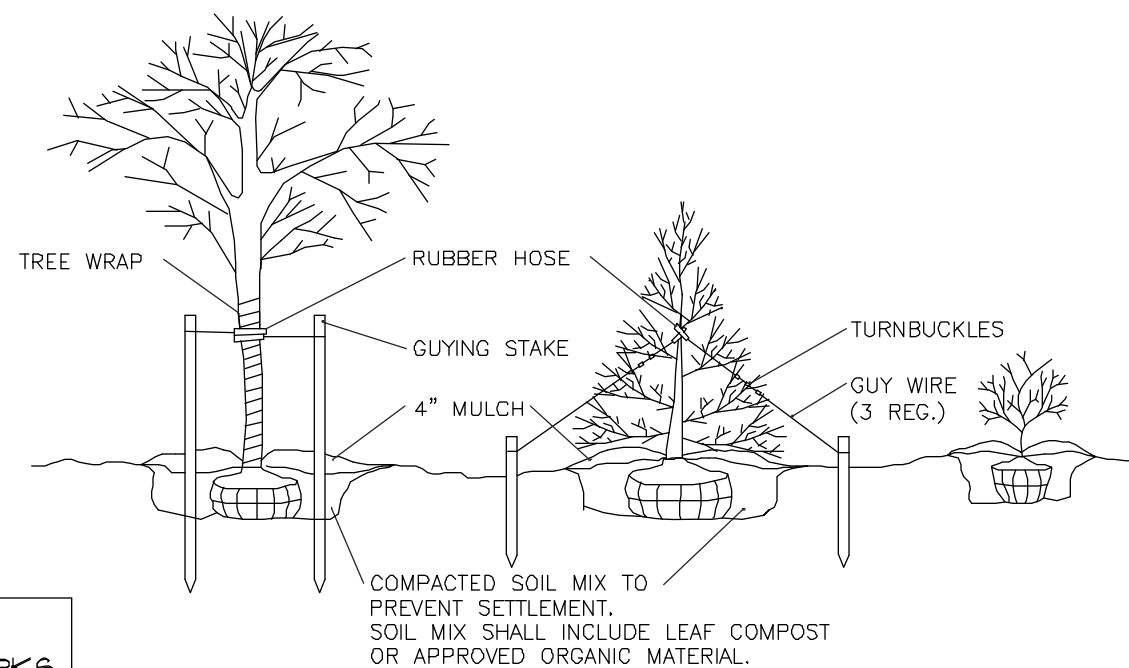
#### LITHONIA LIGHTING

ROSES - 400 WATT  
DISTRIBUTION - TYPE IV  
LAMP - 1000 WATT PRESSURE SODIUM  
WATTS - 100 (PFS)  
COLOR - 3000 K  
MOUNT - 8" DIA. FOR 200' POLE  
MOUNTING HEIGHT (H) = 25  
SYMBOL - LP A

TWO LIGHT FIXTURES ON POLE  
SERIES - 400 WATT  
DISTRIBUTION - TYPE IV  
LAMP - 1000 WATT PRESSURE SODIUM  
WATTS - 200 (PFS)  
COLOR - 3000 K  
MOUNT - 8" DIA. FOR 200' POLE  
MOUNTING HEIGHT (H) = 25  
SYMBOL - LP B



### PARKING LOT DETAIL



DECIDUOUS TREES EVERGREEN TREES SHRUBS

### TYPICAL PLANTING & GUYING DETAIL

PLANTS LIST					
TYPE	KEY	QTY.	BOTANICAL NAME	COMMON NAME	MIN. SIZE REMARKS
DECIDUOUS TREES	Ar	10	Acer Rubrum	Red Maple	3"-3-1/2" C B4B
	Op	2	Quercus Palustris	Pin Oak	3"-3-1/2" C B4B
EVERGREEN TREES	Jv	6	Juniperus Virginiana	Eastern Red Cedar	6' - 7' hgt B4B
	Ns	16	Picea Abies	Norway Spruce	7' - 8' hgt B4B
	Wp	21	Pinus Strobus	White Pine	7' - 8' hgt B4B
EVERGREEN SHRUBS	Jch	28	Juniperus Chinensis "Heitz"	Heitz Juniper	40"-44" Container
DECIDUOUS SHRUBS	Fi	33	Forsythia x Intermedia	Spring Glory Forsythia	34"-36" B4B
GROUND COVERS	Jh	3	Juniperus Horiz. "Bar Harbor"	Bar Harbor Juniper	2 gal. Container

#### ACCORDANCE WITH TOWN CODE 92-191:

LANDSCAPING FOR ALL BUFFER AREAS SHALL BE DESIGNED BY A LICENSED LANDSCAPE ARCHITECT AND SHALL BE GUARANTEED FOR A PERIOD OF THREE YEARS. THEREAFTER IT SHALL BE MAINTAINED BY THE PROPERTY OWNER AS A CONDITION OF APPROVAL. A LANDSCAPE BOND FOR A PERIOD OF THREE YEARS SHALL BE PROVIDED TO THE TOWN IN THE FORM OF CASH OR CONFIRMED AND IRREVOCABLE LETTER OF CREDIT ACCEPTABLE TO THE TOWN ATTORNEY TO INSURE THE INSTALLATION AND MAINTENANCE OF THE LANDSCAPING. RELEASE OF SAID BOND SHALL BE ON THE RECOMMENDATION OF THE BUILDING INSPECTOR OR AUTHORIZED LANDSCAPE PROFESSIONAL DESIGNATED BY THE TOWN.

### LIGHTING, LANDSCAPING PLAN AND SIGNS

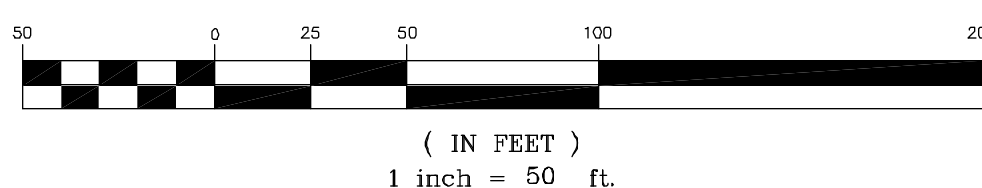
#### FOR BAZS

TOWN OF CHESTER  
SCALE: 1"=50'

ORANGE COUNTY, N.Y.  
AREA= 7.30 ACRES

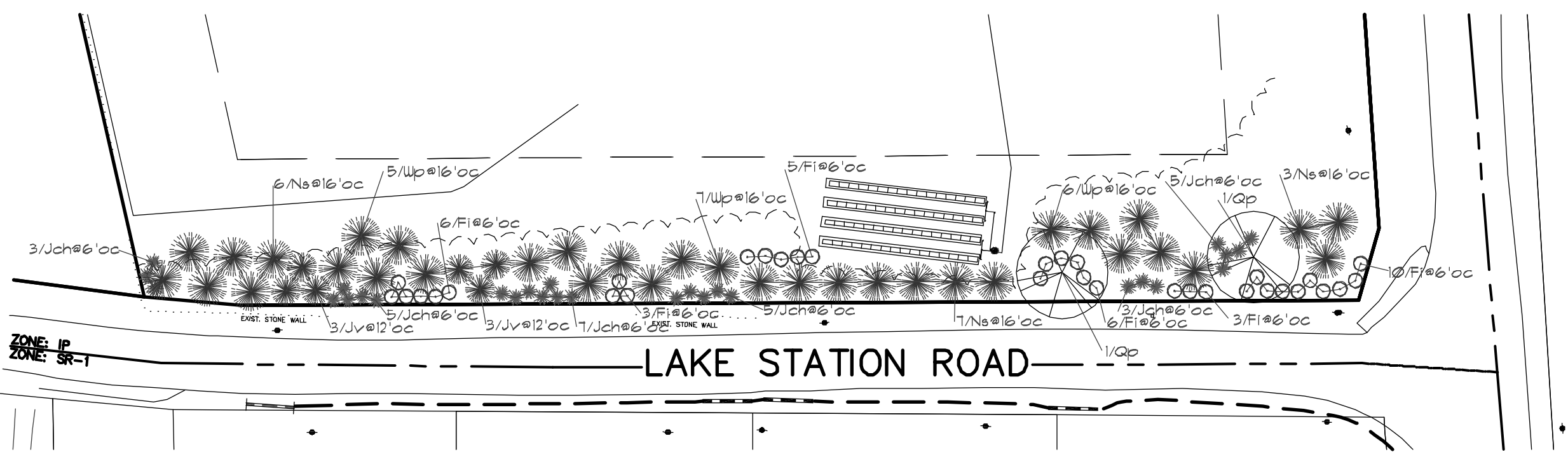
OCTOBER 16, 2014  
REVISED: DECEMBER 3, 2014  
REVISED: FEBRUARY 3, 2015  
REVISED: AUGUST 18, 2015  
REVISED: OCTOBER 14, 2015

### GRAPHIC SCALE



NOTE: NO SITE PREPARATION OR CONSTRUCTION, INCLUDING UTILITY CONNECTIONS SHALL COMMENCE UNTIL A VALID HIGHWAY WORK PERMIT HAS BEEN SECURED FROM THE ORANGE COUNTY DEPARTMENT OF PUBLIC WORKS UNDER SECTION 136 OF THE HIGHWAY LAW.

TOWN OF CHESTER - APPROVAL BOX



### PLANTING PLAN

SCALE: 1"=50'

ESPOSITO & ASSOCIATES  
262 GREENWICH AVENUE  
GOSHEN, NY 10924  
845.294.0558 Fax 845.294.0580

